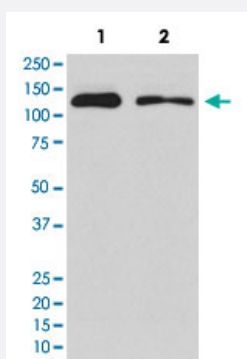


# ULK1 monoclonal antibody, clone ABHH-21

Catalog # MAB20832      Size 100 uL

## Applications



### Western Blot (Cell lysate)

Western Blot analysis of Lane 1: HEK293 and Lane 2: PC12 cell lysates with ULK1 monoclonal antibody, clone ABHH-21 (Cat # MAB20832).

## Specification

**Product Description** Rabbit monoclonal antibody raised against synthetic peptide of human ULK1.

**Immunogen** A synthetic peptide corresponding to human ULK1.

**Host** Rabbit

**Theoretical MW (kDa)** 112.631

**Reactivity** Human

**Form** Liquid

**Purification** Affinity purification

**Isotype** IgG

**Recommend Usage**

- Immunocytochemistry (1:50-1:200)
- Immunofluorescence (1:50-1:200)
- Immunohistochemistry (1:50-1:200)
- Western Blot (1:500-1:2000)
- The optimal working dilution should be determined by the end user.

Storage Buffer	In PBS, 150 mM NaCl, pH 7.4 (50% glycerol, 0.02% sodium azide).
Storage Instruction	Store at -20°C for one year. After reconstitution, at 4°C for one month. It can also be aliquotted and stored frozen at -20°C for a longer time. Avoid repeated freezing and thawing.
Note	This product contains sodium azide: a POISONOUS AND HAZARDOUS SUBSTANCE which should be handled by trained staff only.

## Applications

- Western Blot (Cell lysate)

Western Blot analysis of Lane 1: HEK293 and Lane 2: PC12 cell lysates with ULK1 monoclonal antibody, clone ABHH-21 (Cat # MAB20832).

- Immunohistochemistry
- Immunocytochemistry
- Immunofluorescence

## Gene Info — ULK1

Entrez GeneID	<a href="#">8408</a>
Protein Accession#	<a href="#">O75385</a>
Gene Name	ULK1
Gene Alias	ATG1, FLJ38455, UNC51, Unc51.1
Gene Description	unc-51-like kinase 1 (C. elegans)
Omim ID	<a href="#">603168</a>
Gene Ontology	<a href="#">Hyperlink</a>
Other Designations	ATG1 autophagy related 1 homologunc-51-like kinase 1

## Pathway

- [mTOR signaling pathway](#)

- [Regulation of autophagy](#)