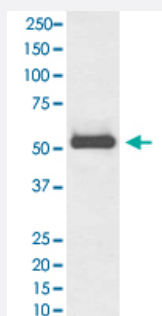


TFG monoclonal antibody, clone HFB-20

Catalog # MAB20809 Size 100 uL

Applications



Western Blot (Cell lysate)

Western Blot analysis of HeLa cell lysate with TFG monoclonal antibody, clone HFB-20 (Cat # MAB20809).

Specification

Product Description Rabbit monoclonal antibody raised against synthetic peptide of human TFG.

Immunogen A synthetic peptide corresponding to human TFG.

Host Rabbit

Theoretical MW (kDa) 43.448

Reactivity Human

Form Liquid

Purification Affinity purification

Isotype IgG

Recommend Usage

- Immunocytochemistry (1:50-1:200)
- Immunofluorescence (1:50-1:200)
- Immunohistochemistry (1:50-1:200)
- Immunoprecipitation (1:50)
- Western Blot (1:5000-1:20000)

The optimal working dilution should be determined by the end user.

Storage Buffer	In PBS, 150 mM NaCl, pH 7.4 (50% glycerol, 0.02% sodium azide).
Storage Instruction	Store at -20°C for one year. After reconstitution, at 4°C for one month. It can also be aliquotted and stored frozen at -20°C for a longer time. Avoid repeated freezing and thawing.
Note	This product contains sodium azide: a POISONOUS AND HAZARDOUS SUBSTANCE which should be handled by trained staff only.

Applications

- Western Blot (Cell lysate)

Western Blot analysis of HeLa cell lysate with TFG monoclonal antibody, clone HFB-20 (Cat # MAB20809).

- Immunohistochemistry
- Immunocytochemistry
- Immunofluorescence
- Immunoprecipitation

Gene Info — TFG

Entrez GeneID	10342
Protein Accession#	Q92734
Gene Name	TFG
Gene Alias	FLJ36137, TF6, TRKT3
Gene Description	TRK-fused gene
Omim ID	602498
Gene Ontology	Hyperlink
Other Designations	TRK-fused TRKT3 oncogene

Pathway

- [Pathways in cancer](#)
- [Thyroid cancer](#)