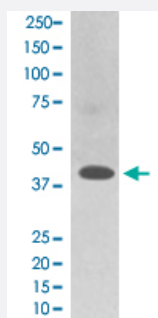


TRAM2 monoclonal antibody, clone BAI-20

Catalog # MAB20805 Size 100 uL

Applications



Western Blot (Cell lysate)

Western Blot analysis of HepG2 cell lysate with TRAM2 monoclonal antibody, clone BAI-20 (Cat # MAB20805).

Specification

Product Description	Rabbit monoclonal antibody raised against synthetic peptide of human TRAM2.
Immunogen	A synthetic peptide corresponding to human TRAM2.
Host	Rabbit
Theoretical MW (kDa)	43.328
Reactivity	Human
Form	Liquid
Purification	Affinity purification
Isotype	IgG
Recommend Usage	Western Blot (1:500-1:2000) The optimal working dilution should be determined by the end user.
Storage Buffer	In PBS, 150 mM NaCl, pH 7.4 (50% glycerol, 0.02% sodium azide).
Storage Instruction	Store at -20°C for one year. After reconstitution, at 4°C for one month. It can also be aliquotted and stored frozen at -20°C for a longer time. Avoid repeated freezing and thawing.

Note

This product contains sodium azide: a POISONOUS AND HAZARDOUS SUBSTANCE which should be handled by trained staff only.

Applications

- Western Blot (Cell lysate)

Western Blot analysis of HepG2 cell lysate with TRAM2 monoclonal antibody, clone BAI-20 (Cat # MAB20805).

Gene Info — TRAM2

Entrez GeneID [9697](#)

Protein Accession# [Q15035](#)

Gene Name TRAM2

Gene Alias KIAA0057

Gene Description translocation associated membrane protein 2

Omim ID [608485](#)

Gene Ontology [Hyperlink](#)

Gene Summary TRAM2 is a component of the translocon, a gated macromolecular channel that controls the posttranslational processing of nascent secretory and membrane proteins at the endoplasmic reticulum (ER) membrane.[supplied by OMIM]

Other Designations OTTHUMP00000016607|TRAM-like protein|translocation-associated membrane protein 2

Disease

- [Celiac Disease](#)
- [Genetic Predisposition to Disease](#)
- [Tobacco Use Disorder](#)