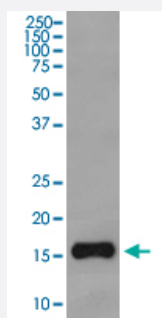


# TOMM20 monoclonal antibody, clone EOC-20

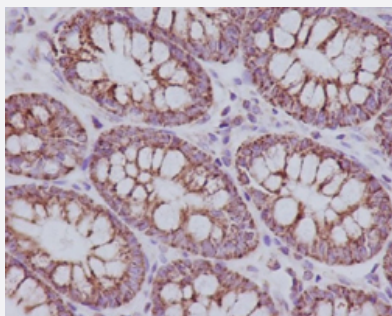
Catalog # MAB20796      Size 100 uL

## Applications



### Western Blot (Cell lysate)

Western Blot analysis of HepG2 cell lysate with TOMM20 monoclonal antibody, clone EOC-20 (Cat # MAB20796).



### Immunohistochemistry (Formalin/PFA-fixed paraffin-embedded sections)

Immunohistochemical staining (Formalin-fixed paraffin-embedded sections) of human colon with TOMM20 monoclonal antibody, clone EOC-20 (Cat # MAB20796).

## Specification

<b>Product Description</b>	Rabbit monoclonal antibody raised against synthetic peptide of human TOMM20.
<b>Immunogen</b>	A synthetic peptide corresponding to human TOMM20.
<b>Host</b>	Rabbit
<b>Theoretical MW (kDa)</b>	16.298
<b>Reactivity</b>	Human
<b>Form</b>	Liquid
<b>Purification</b>	Affinity purification

Isotype	IgG
Recommend Usage	Flow Cytometry (1:100) Immunocytochemistry (1:50-1:200) Immunofluorescence (1:50-1:200) Immunohistochemistry (Formalin/PFA-fixed paraffin-embedded sections) (1:50-1:200) Western Blot (1:500-1:2000) The optimal working dilution should be determined by the end user.
Storage Buffer	In PBS, 150 mM NaCl, pH 7.4 (50% glycerol, 0.02% sodium azide).
Storage Instruction	Store at -20°C for one year. After reconstitution, at 4°C for one month. It can also be aliquotted and stored frozen at -20°C for a longer time. Avoid repeated freezing and thawing.
Note	This product contains sodium azide: a POISONOUS AND HAZARDOUS SUBSTANCE which should be handled by trained staff only.

## Applications

- Western Blot (Cell lysate)

Western Blot analysis of HepG2 cell lysate with TOMM20 monoclonal antibody, clone EOC-20 (Cat # MAB20796).

- Immunohistochemistry (Formalin/PFA-fixed paraffin-embedded sections)

Immunohistochemical staining (Formalin-fixed paraffin-embedded sections) of human colon with TOMM20 monoclonal antibody, clone EOC-20 (Cat # MAB20796).

- Immunocytochemistry

- Immunofluorescence

- Flow Cytometry

## Gene Info — TOMM20

Entrez GeneID	<a href="#">9804</a>
Protein Accession#	<a href="#">Q15388</a>
Gene Name	TOMM20
Gene Alias	KIAA0016, MAS20, MGC117367, MOM19, TOM20
Gene Description	translocase of outer mitochondrial membrane 20 homolog (yeast)

Omim ID	<a href="#">601848</a>
Gene Ontology	<a href="#">Hyperlink</a>
Other Designations	OTTHUMP00000037593 translocase of outer mitochondrial membrane 20 homolog translocase of outer mitochondrial membrane 20 homolog type II