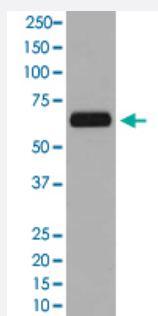


TCF7L1 monoclonal antibody, clone CAH-20

Catalog # MAB20772 Size 100 uL

Applications



Western Blot (Cell lysate)

Western Blot analysis of A431 cell lysate with TCF7L1 monoclonal antibody, clone CAH-20 (Cat # MAB20772).

Specification

Product Description Rabbit monoclonal antibody raised against synthetic peptide of human TCF7L1.

Immunogen A synthetic peptide corresponding to human TCF7L1.

Host Rabbit

Theoretical MW (kDa) 62.631

Reactivity Human

Form Liquid

Purification Affinity purification

Isotype IgG

Recommend Usage
Flow Cytometry
Western Blot (1:500-1:2000)
The optimal working dilution should be determined by the end user.

Storage Buffer In PBS, 150 mM NaCl, pH 7.4 (50% glycerol, 0.02% sodium azide).

Storage Instruction

Store at -20°C for one year. After reconstitution, at 4°C for one month. It can also be aliquotted and stored frozen at -20°C for a longer time. Avoid repeated freezing and thawing.

Note

This product contains sodium azide: a POISONOUS AND HAZARDOUS SUBSTANCE which should be handled by trained staff only.

Applications

- Western Blot (Cell lysate)

Western Blot analysis of A431 cell lysate with TCF7L1 monoclonal antibody, clone CAH-20 (Cat # MAB20772).

- Flow Cytometry

Gene Info — TCF7L1

Entrez GeneID [83439](#)

Protein Accession# [Q9HCS4](#)

Gene Name TCF7L1

Gene Alias TCF-3, TCF3

Gene Description transcription factor 7-like 1 (T-cell specific, HMG-box)

Omim ID [604652](#)

Gene Ontology [Hyperlink](#)

Gene Summary TCF/LEF transcription factors, such as TCF7L1, are mediators of the Wnt (see MIM 164820) signaling pathway and are antagonized by the TGF-beta (TGFB1; MIM 190180) signaling pathway (Sagara and Katoh, 2000 [PubMed 11085512]).[supplied by OMIM]

Other Designations HMG-box transcription factor TCF-3

Pathway

- [Acute myeloid leukemia](#)
- [Adherens junction](#)
- [Arrhythmogenic right ventricular cardiomyopathy \(ARVC\)](#)

- [Basal cell carcinoma](#)
- [Colorectal cancer](#)
- [Endometrial cancer](#)
- [Melanogenesis](#)
- [Pathways in cancer](#)
- [Prostate cancer](#)
- [Thyroid cancer](#)
- [Wnt signaling pathway](#)

Disease

- [Bipolar Disorder](#)
- [Kidney Failure](#)
- [Tobacco Use Disorder](#)