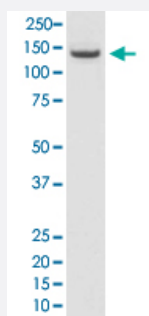


TACC3 monoclonal antibody, clone AGE-20

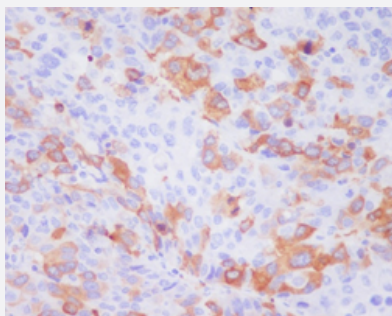
Catalog # MAB20766 Size 100 uL

Applications



Western Blot (Cell lysate)

Western Blot analysis of C6 cell lysate with TACC3 monoclonal antibody, clone AGE-20 (Cat # MAB20766).



Immunohistochemistry (Formalin/PFA-fixed paraffin-embedded sections)

Immunohistochemical staining (Formalin-fixed paraffin-embedded sections) of human liver cancer with TACC3 monoclonal antibody, clone AGE-20 (Cat # MAB20766).

Specification

Product Description	Rabbit monoclonal antibody raised against synthetic peptide of human TACC3.
Immunogen	A synthetic peptide corresponding to human TACC3.
Host	Rabbit
Theoretical MW (kDa)	90.36
Reactivity	Human
Form	Liquid
Purification	Affinity purification

Isotype	IgG
Recommend Usage	Immunocytochemistry (1:50-1:200) Immunofluorescence (1:50-1:200) Immunohistochemistry (Formalin/PFA-fixed paraffin-embedded sections) (1:50-1:200) Western Blot (1:500-1:2000) The optimal working dilution should be determined by the end user.
Storage Buffer	In PBS, 150 mM NaCl, pH 7.4 (50% glycerol, 0.02% sodium azide).
Storage Instruction	Store at -20°C for one year. After reconstitution, at 4°C for one month. It can also be aliquotted and stored frozen at -20°C for a longer time. Avoid repeated freezing and thawing.
Note	This product contains sodium azide: a POISONOUS AND HAZARDOUS SUBSTANCE which should be handled by trained staff only.

Applications

- Western Blot (Cell lysate)

Western Blot analysis of C6 cell lysate with TACC3 monoclonal antibody, clone AGE-20 (Cat # MAB20766).

- Immunohistochemistry (Formalin/PFA-fixed paraffin-embedded sections)

Immunohistochemical staining (Formalin-fixed paraffin-embedded sections) of human liver cancer with TACC3 monoclonal antibody, clone AGE-20 (Cat # MAB20766).

- Immunocytochemistry

- Immunofluorescence

Gene Info — TACC3

Entrez GeneID	10460
Protein Accession#	Q9Y6A5
Gene Name	TACC3
Gene Alias	ERIC1, MGC117382, MGC133242
Gene Description	transforming, acidic coiled-coil containing protein 3
Omim ID	605303
Gene Ontology	Hyperlink

Gene Summary

The function of this gene has not yet been determined; however, it is speculated that it may be involved in cell growth and differentiation. Expression of this gene is up-regulated in some cancer cell lines, and in embryonic day 15 in mice. [provided by RefSeq]

Other Designations

-

Disease

- [Adenocarcinoma](#)
- [Genetic Predisposition to Disease](#)
- [Kidney Failure](#)
- [Pancreatic Neoplasms](#)
- [Recurrence](#)
- [Urinary Bladder Neoplasms](#)