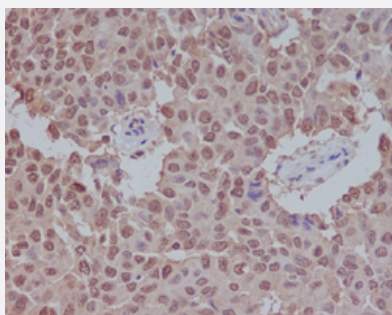


SUMO1 monoclonal antibody, clone BFI-19

Catalog # MAB20757 Size 100 uL

Applications



Immunohistochemistry (Formalin/PFA-fixed paraffin-embedded sections)

Immunohistochemical staining (Formalin-fixed paraffin-embedded sections) of human breast carcinoma with SUMO1 monoclonal antibody, clone BFI-19 (Cat # MAB20757).

Specification

Product Description	Rabbit monoclonal antibody raised against synthetic peptide of human SUMO1.
Immunogen	A synthetic peptide corresponding to human SUMO1.
Host	Rabbit
Theoretical MW (kDa)	11.557
Reactivity	Human
Form	Liquid
Purification	Affinity purification
Isotype	IgG
Recommend Usage	Flow Cytometry (1:50) Immunocytochemistry (1:50-1:200) Immunofluorescence (1:50-1:200) Immunohistochemistry (Formalin/PFA-fixed paraffin-embedded sections) (1:50-1:200) Immunoprecipitation (1:50) Western Blot (1:500-1:2000) The optimal working dilution should be determined by the end user.

Storage Buffer	In PBS, 150 mM NaCl, pH 7.4 (50% glycerol, 0.02% sodium azide).
Storage Instruction	Store at -20°C for one year. After reconstitution, at 4°C for one month. It can also be aliquotted and stored frozen at -20°C for a longer time. Avoid repeated freezing and thawing.
Note	This product contains sodium azide: a POISONOUS AND HAZARDOUS SUBSTANCE which should be handled by trained staff only.

Applications

- Western Blot
- Immunohistochemistry (Formalin/PFA-fixed paraffin-embedded sections)

Immunohistochemical staining (Formalin-fixed paraffin-embedded sections) of human breast carcinoma with SUMO1 monoclonal antibody, clone BFI-19 (Cat # MAB20757).

- Immunocytochemistry
- Immunofluorescence
- Immunoprecipitation
- Flow Cytometry

Gene Info — SUMO1

Entrez GeneID	7341
Protein Accession#	P63165
Gene Name	SUMO1
Gene Alias	DAP-1, GMP1, OFC10, PIC1, SENP2, SMT3, SMT3C, SMT3H3, SUMO-1, UBL1
Gene Description	SMT3 suppressor of mif two 3 homolog 1 (S. cerevisiae)
Omim ID	601912
Gene Ontology	Hyperlink

Gene Summary

This gene encodes a protein that is a member of the SUMO (small ubiquitin-like modifier) protein family. It functions in a manner similar to ubiquitin in that it is bound to target proteins as part of a post-translational modification system. However, unlike ubiquitin which targets proteins for degradation, this protein is involved in a variety of cellular processes, such as nuclear transport, transcriptional regulation, apoptosis, and protein stability. It is not active until the last four amino acids of the carboxy-terminus have been cleaved off. Several pseudogenes have been reported for this gene. Alternate transcriptional splice variants encoding different isoforms have been characterized. [provided by RefSeq]

Other Designations

GAP modifying protein 1|SMT3 suppressor of mif two 3 homolog 1|sentrin|ubiquitin-like 1 (sentrin)

Disease

- [Carcinoma](#)
- [Cardiovascular Diseases](#)
- [Cleft Lip](#)
- [Cleft Palate](#)
- [Diabetes Mellitus](#)
- [Edema](#)
- [Genetic Predisposition to Disease](#)
- [Lung Neoplasms](#)
- [Tooth Abnormalities](#)