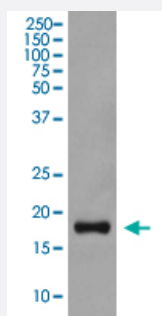


STMN1 monoclonal antibody, clone DDA-19

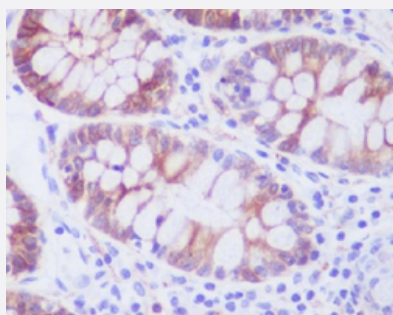
Catalog # MAB20754 Size 100 uL

Applications



Western Blot (Cell lysate)

Western Blot analysis of PC-12 cell lysate with STMN1 monoclonal antibody, clone DDA-19 (Cat # MAB20754).



Immunohistochemistry (Formalin/PFA-fixed paraffin-embedded sections)

Immunohistochemical staining (Formalin-fixed paraffin-embedded sections) of human colon with STMN1 monoclonal antibody, clone DDA-19 (Cat # MAB20754).

Specification

Product Description	Rabbit monoclonal antibody raised against synthetic peptide of human STMN1.
Immunogen	A synthetic peptide corresponding to human STMN1.
Host	Rabbit
Theoretical MW (kDa)	17.303
Reactivity	Human
Form	Liquid
Purification	Affinity purification

Isotype	IgG
Recommend Usage	Flow Cytometry (1:50) Immunocytochemistry (1:50-1:100) Immunofluorescence (1:50-1:100) Immunohistochemistry (Formalin/PFA-fixed paraffin-embedded sections) (1:50-1:100) Immunoprecipitation (1:50) Western Blot (1:500-1:2000) The optimal working dilution should be determined by the end user.
Storage Buffer	In PBS, 150 mM NaCl, pH 7.4 (50% glycerol, 0.02% sodium azide).
Storage Instruction	Store at -20°C for one year. After reconstitution, at 4°C for one month. It can also be aliquotted and stored frozen at -20°C for a longer time. Avoid repeated freezing and thawing.
Note	This product contains sodium azide: a POISONOUS AND HAZARDOUS SUBSTANCE which should be handled by trained staff only.

Applications

- Western Blot (Cell lysate)

Western Blot analysis of PC-12 cell lysate with STMN1 monoclonal antibody, clone DDA-19 (Cat # MAB20754).

- Immunohistochemistry (Formalin/PFA-fixed paraffin-embedded sections)

Immunohistochemical staining (Formalin-fixed paraffin-embedded sections) of human colon with STMN1 monoclonal antibody, clone DDA-19 (Cat # MAB20754).

- Immunocytochemistry

- Immunofluorescence

- Immunoprecipitation

- Flow Cytometry

Gene Info — STMN1

Entrez GeneID [3925](#)

Protein Accession# [P16949](#)

Gene Name STMN1

Gene Alias	LAP18, Lag, OP18, PP17, PP19, PR22, SMN
Gene Description	stathmin 1/oncoprotein 18
Omim ID	151442
Gene Ontology	Hyperlink
Gene Summary	This gene belongs to the stathmin family of genes. It encodes a ubiquitous cytosolic phosphoprotein proposed to function as an intracellular relay integrating regulatory signals of the cellular environment. The encoded protein is involved in the regulation of the microtubule filament system by destabilizing microtubules. It prevents assembly and promotes disassembly of microtubules. Multiple transcript variants encoding different isoforms have been found for this gene. [provided by RefSeq]
Other Designations	OTTHUMP00000008527 OTTHUMP00000008528 OTTHUMP00000008530 leukemia-associated phosphoprotein p18 metablastin oncoprotein 18 phosphoprotein 19 prosolin stathmin 1

Pathway

- [MAPK signaling pathway](#)

Disease

- [Anorexia Nervosa](#)
- [Bulimia](#)
- [Genetic Predisposition to Disease](#)
- [Startle Reaction](#)