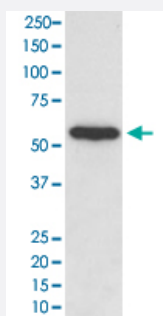


SRC monoclonal antibody, clone III-19

Catalog # MAB20741

Size 100 uL

Applications



Western Blot (Cell lysate)

Western Blot analysis of HeLa cell lysate with SRC monoclonal antibody, clone III-19 (Cat # MAB20741).

Specification

Product Description Rabbit monoclonal antibody raised against synthetic peptide of human SRC.

Immunogen A synthetic peptide corresponding to human SRC.

Host Rabbit

Theoretical MW (kDa) 59.835

Reactivity Human

Form Liquid

Purification Affinity purification

Isotype IgG

Recommend Usage

- Flow Cytometry (1:50)
- Immunocytochemistry (1:50-1:200)
- Immunofluorescence (1:50-1:200)
- Immunohistochemistry (1:50-1:200)
- Western Blot (1:1000-1:2000)

The optimal working dilution should be determined by the end user.

Storage Buffer	In PBS, 150 mM NaCl, pH 7.4 (50% glycerol, 0.02% sodium azide).
Storage Instruction	Store at -20°C for one year. After reconstitution, at 4°C for one month. It can also be aliquotted and stored frozen at -20°C for a longer time. Avoid repeated freezing and thawing.
Note	This product contains sodium azide: a POISONOUS AND HAZARDOUS SUBSTANCE which should be handled by trained staff only.

Applications

- Western Blot (Cell lysate)

Western Blot analysis of HeLa cell lysate with SRC monoclonal antibody, clone Ill-19 (Cat # MAB20741).

- Immunohistochemistry

- Immunocytochemistry

- Immunofluorescence

- Flow Cytometry

Gene Info — SRC

Entrez GeneID	6714
Protein Accession#	P12931
Gene Name	SRC
Gene Alias	ASV, SRC1, c-SRC, p60-Src
Gene Description	v-src sarcoma (Schmidt-Ruppin A-2) viral oncogene homolog (avian)
Omim ID	190090
Gene Ontology	Hyperlink
Gene Summary	This gene is highly similar to the v-src gene of Rous sarcoma virus. This proto-oncogene may play a role in the regulation of embryonic development and cell growth. The protein encoded by this gene is a tyrosine-protein kinase whose activity can be inhibited by phosphorylation by c-SRC kinase. Mutations in this gene could be involved in the malignant progression of colon cancer. Two transcript variants encoding the same protein have been found for this gene. [provided by RefSeq]

Other Designations

OTTHUMP00000174476|OTTHUMP00000174477|proto-oncogene tyrosine-protein kinase SRC|protooncogene SRC, Rous sarcoma|tyrosine kinase pp60c-src|tyrosine-protein kinase SRC-1

Pathway

- [Adherens junction](#)
- [Endocytosis](#)
- [Epithelial cell signaling in Helicobacter pylori infection](#)
- [ErbB signaling pathway](#)
- [Focal adhesion](#)
- [Gap junction](#)
- [GnRH signaling pathway](#)
- [Tight junction](#)
- [VEGF signaling pathway](#)

Disease

- [Genetic Predisposition to Disease](#)
- [HIV Infections](#)
- [Thyroid Neoplasms](#)