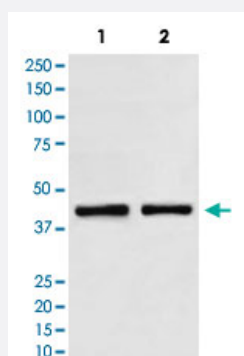


SMARCB1 monoclonal antibody, clone AFO-19

Catalog # MAB20725 Size 100 uL

Applications



Western Blot (Cell lysate)

Western Blot analysis of Lane 1: HeLa and Lane 2: K562 cell lysates with SMARCB1 monoclonal antibody, clone AFO-19 (Cat # MAB20725).

Specification

Product Description	Rabbit monoclonal antibody raised against synthetic peptide of human SMARCB1.
Immunogen	A synthetic peptide corresponding to human SMARCB1.
Host	Rabbit
Theoretical MW (kDa)	44.141
Reactivity	Human
Form	Liquid
Purification	Affinity purification
Isotype	IgG
Recommend Usage	Immunoprecipitation (1:50) Western Blot (1:500-1:2000) The optimal working dilution should be determined by the end user.
Storage Buffer	In PBS, 150 mM NaCl, pH 7.4 (50% glycerol, 0.02% sodium azide).

Storage Instruction

Store at -20°C for one year. After reconstitution, at 4°C for one month. It can also be aliquotted and stored frozen at -20°C for a longer time. Avoid repeated freezing and thawing.

Note

This product contains sodium azide: a POISONOUS AND HAZARDOUS SUBSTANCE which should be handled by trained staff only.

Applications

- Western Blot (Cell lysate)

Western Blot analysis of Lane 1: HeLa and Lane 2: K562 cell lysates with SMARCB1 monoclonal antibody, clone AFO-19 (Cat # MAB20725).

- Immunoprecipitation

Gene Info — SMARCB1

Entrez GeneID[6598](#)**Protein Accession#**[Q12824](#)**Gene Name**

SMARCB1

Gene Alias

BAF47, INI1, RDT, SNF5, SNF5L1, Sfh1p, Snr1, hSNFS

Gene Description

SWI/SNF related, matrix associated, actin dependent regulator of chromatin, subfamily b, member 1

Omim ID[601607](#)**Gene Ontology**[Hyperlink](#)**Gene Summary**

The protein encoded by this gene is part of a complex that relieves repressive chromatin structures, allowing the transcriptional machinery to access its targets more effectively. The encoded nuclear protein may also bind to and enhance the DNA joining activity of HIV-1 integrase. This gene has been found to be a tumor suppressor, and mutations in it have been associated with malignant rhabdoid tumors. Two transcript variants encoding different isoforms have been found for this gene. [provided by RefSeq]

Other Designations

integrase interactor 1|malignant rhabdoid tumor suppressor|sucrose nonfermenting, yeast, homolog-like 1

Disease

- [Asthma](#)
- [Cardiovascular Diseases](#)
- [Diabetes Mellitus](#)
- [Edema](#)
- [Genetic Predisposition to Disease](#)
- [Meningeal Neoplasms](#)
- [Meningioma](#)
- [Pancreatic cancer](#)
- [Pancreatic Neoplasms](#)
- [Rhabdoid Tumor](#)