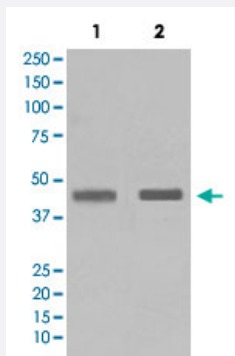


# SETD7 monoclonal antibody, clone ABA-19

Catalog # MAB20703      Size 100 uL

## Applications



### Western Blot (Cell lysate)

Western Blot analysis of Lane 1: Jurkat and Lane 2: HeLa cell lysates with SETD7 monoclonal antibody, clone ABA-19 (Cat # MAB20703).

## Specification

**Product Description** Rabbit monoclonal antibody raised against synthetic peptide of human SETD7.

**Immunogen** A synthetic peptide corresponding to human SETD7.

**Host** Rabbit

**Theoretical MW (kDa)** 40.721

**Reactivity** Human

**Form** Liquid

**Purification** Affinity purification

**Isotype** IgG

**Recommend Usage**  
Immunoprecipitation (1:50)  
Western Blot (1:500-1:2000)  
The optimal working dilution should be determined by the end user.

**Storage Buffer** In PBS, 150 mM NaCl, pH 7.4 (50% glycerol, 0.02% sodium azide).

**Storage Instruction**

Store at -20°C for one year. After reconstitution, at 4°C for one month. It can also be aliquotted and stored frozen at -20°C for a longer time. Avoid repeated freezing and thawing.

**Note**

This product contains sodium azide: a POISONOUS AND HAZARDOUS SUBSTANCE which should be handled by trained staff only.

## Applications

- Western Blot (Cell lysate)

Western Blot analysis of Lane 1: Jurkat and Lane 2: HeLa cell lysates with SETD7 monoclonal antibody, clone ABA-19 (Cat # MAB20703).

- Immunoprecipitation

## Gene Info — SETD7

**Entrez GeneID** [80854](#)

**Protein Accession#** [Q8WTS6](#)

**Gene Name** SETD7

**Gene Alias** FLJ21193, KIAA1717, KMT7, SET7, SET7/9, SET9

**Gene Description** SET domain containing (lysine methyltransferase) 7

**Omim ID** [606594](#)

**Gene Ontology** [Hyperlink](#)

**Other Designations** H3-K4-HMTase|SET domain-containing protein 7|histone H3-K4 methyltransferase|histone H3-lysine 4-specific methyltransferase

## Pathway

- [Lysine degradation](#)

## Disease

- [Tobacco Use Disorder](#)