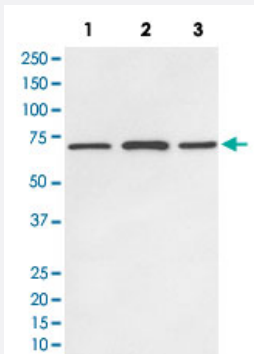


SDHA monoclonal antibody, clone AADA-19

Catalog # MAB20698 Size 100 uL

Applications



Western Blot

Western Blot analysis of Lane 1: HeLa cell, Lane 2: mouse brain tissue and Lane 3: rat brain tissue lysates with SDHA monoclonal antibody, clone AADA-19 (Cat # MAB20698).

Specification

Product Description	Rabbit monoclonal antibody raised against synthetic peptide of human SDHA.
Immunogen	A synthetic peptide corresponding to human SDHA.
Host	Rabbit
Theoretical MW (kDa)	72.692
Reactivity	Human
Form	Liquid
Purification	Affinity purification
Isotype	IgG

Recommend Usage	Flow Cytometry (1:20) Immunocytochemistry (1:50-1:200) Immunofluorescence (1:50-1:200) Immunohistochemistry (1:50-1:200) Immunoprecipitation (1:20) Western Blot (1:500-1:2000) The optimal working dilution should be determined by the end user.
Storage Buffer	In PBS, 150 mM NaCl, pH 7.4 (50% glycerol, 0.02% sodium azide).
Storage Instruction	Store at -20°C for one year. After reconstitution, at 4°C for one month. It can also be aliquotted and stored frozen at -20°C for a longer time. Avoid repeated freezing and thawing.
Note	This product contains sodium azide: a POISONOUS AND HAZARDOUS SUBSTANCE which should be handled by trained staff only.

Applications

- Western Blot

Western Blot analysis of Lane 1: HeLa cell, Lane 2: mouse brain tissue and Lane 3: rat brain tissue lysates with SDHA monoclonal antibody, clone AADA-19 (Cat # MAB20698).

- Immunohistochemistry

- Immunocytochemistry

- Immunofluorescence

- Immunoprecipitation

- Flow Cytometry

Gene Info — SDHA

Entrez GeneID	6389
Protein Accession#	P31040
Gene Name	SDHA
Gene Alias	FP, SDH2, SDHF
Gene Description	succinate dehydrogenase complex, subunit A, flavoprotein (Fp)

Omim ID [252011 256000 600857](#)

Gene Ontology [Hyperlink](#)

Gene Summary This gene encodes a major catalytic subunit of succinate-ubiquinone oxidoreductase, a complex of the mitochondrial respiratory chain. The complex is composed of four nuclear-encoded subunits and is localized in the mitochondrial inner membrane. Mutations in this gene have been associated with a form of mitochondrial respiratory chain deficiency known as Leigh Syndrome. A pseudo gene has been identified on chromosome 3q29. [provided by RefSeq]

Other Designations succinate dehydrogenase complex flavoprotein subunit|succinate dehydrogenase complex, subunit A, flavoprotein

Pathway

- [Biosynthesis of alkaloids derived from histidine and purine](#)
- [Biosynthesis of alkaloids derived from ornithine](#)
- [Biosynthesis of alkaloids derived from shikimate pathway](#)
- [Biosynthesis of alkaloids derived from terpenoid and polyketide](#)
- [Biosynthesis of phenylpropanoids](#)
- [Biosynthesis of plant hormones](#)
- [Biosynthesis of terpenoids and steroids](#)
- [Citrate cycle \(TCA cycle\)](#)
- [Metabolic pathways](#)
- [Oxidative phosphorylation](#)

Disease

- [Genetic Predisposition to Disease](#)
- [Infertility](#)
- [Prostatic Neoplasms](#)