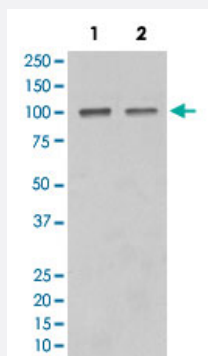


# SATB1 monoclonal antibody, clone ACO-19

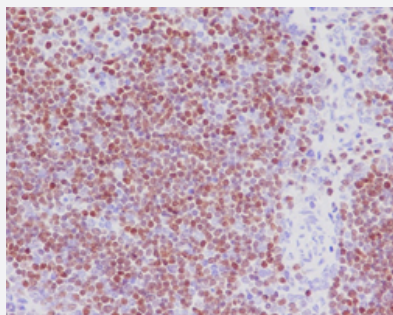
Catalog # MAB20693      Size 100 uL

## Applications



### Western Blot

Western Blot analysis of Lane 1: mouse thymus tissue and Lane 2: Jurkat cell lysates with SATB1 monoclonal antibody, clone ACO-19 (Cat # MAB20693).



### Immunohistochemistry (Formalin/PFA-fixed paraffin-embedded sections)

Immunohistochemical staining (Formalin-fixed paraffin-embedded sections) of human thymus with SATB1 monoclonal antibody, clone ACO-19 (Cat # MAB20693).

## Specification

Product Description	Rabbit monoclonal antibody raised against synthetic peptide of human SATB1.
Immunogen	A synthetic peptide corresponding to human SATB1.
Host	Rabbit
Theoretical MW (kDa)	85.957
Reactivity	Human
Form	Liquid

<b>Purification</b>	Affinity purification
<b>Isotype</b>	IgG
<b>Recommend Usage</b>	Flow Cytometry (1:200-1:500) Immunocytochemistry (1:100-1:500) Immunofluorescence (1:100-1:500) Immunohistochemistry (Formalin/PFA-fixed paraffin-embedded sections) (1:50-1:200) Immunoprecipitation (1:50-1:100) Western Blot (1:500-1:3000) The optimal working dilution should be determined by the end user.
<b>Storage Buffer</b>	In PBS, 150 mM NaCl, pH 7.4 (50% glycerol, 0.02% sodium azide).
<b>Storage Instruction</b>	Store at -20°C for one year. After reconstitution, at 4°C for one month. It can also be aliquotted and stored frozen at -20°C for a longer time. Avoid repeated freezing and thawing.
<b>Note</b>	This product contains sodium azide: a POISONOUS AND HAZARDOUS SUBSTANCE which should be handled by trained staff only.

## Applications

- Western Blot

Western Blot analysis of Lane 1: mouse thymus tissue and Lane 2: Jurkat cell lysates with SATB1 monoclonal antibody, clone ACO-19 (Cat # MAB20693).

- Immunohistochemistry (Formalin/PFA-fixed paraffin-embedded sections)

Immunohistochemical staining (Formalin-fixed paraffin-embedded sections) of human thymus with SATB1 monoclonal antibody, clone ACO-19 (Cat # MAB20693).

- Immunocytochemistry

- Immunofluorescence

- Immunoprecipitation

- Flow Cytometry

## Gene Info — SATB1

Entrez GeneID [6304](#)

Protein Accession# [Q01826](#)

Gene Name	SATB1
Gene Alias	-
Gene Description	SATB homeobox 1
Omim ID	<a href="#">602075</a>
Gene Ontology	<a href="#">Hyperlink</a>
Other Designations	DNA-binding protein SATB1 special AT-rich sequence binding protein 1 special AT-rich sequence binding protein 1 (binds to nuclear matrix/scaffold-associating DNA's)

## Disease

- [Tobacco Use Disorder](#)