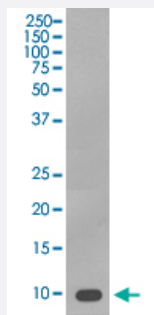


# S100B monoclonal antibody, clone BCB-19

Catalog # MAB20690

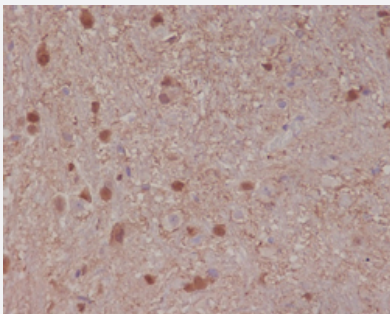
Size 100 uL

## Applications



### Western Blot (Cell lysate)

Western Blot analysis of A375 cell lysate with S100B monoclonal antibody, clone BCB-19 (Cat # MAB20690).



### Immunohistochemistry (Formalin/PFA-fixed paraffin-embedded sections)

Immunohistochemical staining (Formalin-fixed paraffin-embedded sections) of rat brain with S100B monoclonal antibody, clone BCB-19 (Cat # MAB20690).

## Specification

<b>Product Description</b>	Rabbit monoclonal antibody raised against synthetic peptide of human S100B.
<b>Immunogen</b>	A synthetic peptide corresponding to human S100B.
<b>Host</b>	Rabbit
<b>Theoretical MW (kDa)</b>	10.713
<b>Reactivity</b>	Human
<b>Form</b>	Liquid
<b>Purification</b>	Affinity purification

Isotype	IgG
Recommend Usage	Immunocytochemistry (1:50-1:200) Immunofluorescence (1:50-1:200) Immunohistochemistry (Formalin/PFA-fixed paraffin-embedded sections) (1:50-1:200) Immunoprecipitation (1:50) Western Blot (1:500-1:2000) The optimal working dilution should be determined by the end user.
Storage Buffer	In PBS, 150 mM NaCl, pH 7.4 (50% glycerol, 0.02% sodium azide).
Storage Instruction	Store at -20°C for one year. After reconstitution, at 4°C for one month. It can also be aliquotted and stored frozen at -20°C for a longer time. Avoid repeated freezing and thawing.
Note	This product contains sodium azide: a POISONOUS AND HAZARDOUS SUBSTANCE which should be handled by trained staff only.

## Applications

- Western Blot (Cell lysate)

Western Blot analysis of A375 cell lysate with S100B monoclonal antibody, clone BCB-19 (Cat # MAB20690).

- Immunohistochemistry (Formalin/PFA-fixed paraffin-embedded sections)

Immunohistochemical staining (Formalin-fixed paraffin-embedded sections) of rat brain with S100B monoclonal antibody, clone BCB-19 (Cat # MAB20690).

- Immunocytochemistry

- Immunofluorescence

- Immunoprecipitation

## Gene Info — S100B

Entrez GeneID	<a href="#">6285</a>
Protein Accession#	<a href="#">P04271</a>
Gene Name	S100B
Gene Alias	NEF, S100, S100beta
Gene Description	S100 calcium binding protein B

Omim ID [176990](#)

Gene Ontology [Hyperlink](#)

### Gene Summary

The protein encoded by this gene is a member of the S100 family of proteins containing 2 EF-hand calcium-binding motifs. S100 proteins are localized in the cytoplasm and/or nucleus of a wide range of cells, and involved in the regulation of a number of cellular processes such as cell cycle progression and differentiation. S100 genes include at least 13 members which are located as a cluster on chromosome 1q21; however, this gene is located at 21q22.3. This protein may function in Neurite extension, proliferation of melanoma cells, stimulation of Ca<sup>2+</sup> fluxes, inhibition of PKC-mediated phosphorylation, astrocytosis and axonal proliferation, and inhibition of microtubule assembly. Chromosomal rearrangements and altered expression of this gene have been implicated in several neurological, neoplastic, and other types of diseases, including Alzheimer's disease, Down's syndrome, epilepsy, amyotrophic lateral sclerosis, melanoma, and type I diabetes. [provided by RefSeq]

### Other Designations

OTTHUMP00000174958|S-100 calcium-binding protein, beta chain|S100 beta|S100 calcium binding protein, beta (neural)|S100 calcium-binding protein, beta|S100 calcium-binding protein, beta (neural)

## Disease

- [Alzheimer disease](#)
- [Bipolar Disorder](#)
- [Cognition Disorders](#)
- [Dementia](#)
- [Depressive Disorder](#)
- [Diseases in Twins](#)
- [Genetic Predisposition to Disease](#)
- [Mental Disorders](#)
- [Neuropsychological Tests](#)
- [Psychotic Disorders](#)
- [Schizophrenia](#)