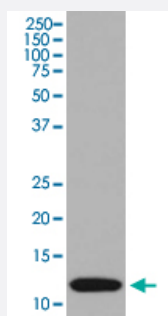


S100A4 monoclonal antibody, clone GFG-19

Catalog # MAB20688

Size 100 uL

Applications



Western Blot (Cell lysate)

Western Blot analysis of A375 cell lysate with S100A4 monoclonal antibody, clone GFG-19 (Cat # MAB20688).

Specification

Product Description Rabbit monoclonal antibody raised against synthetic peptide of human S100A4.

Immunogen A synthetic peptide corresponding to human S100A4.

Host Rabbit

Theoretical MW (kDa) 11.729

Reactivity Human

Form Liquid

Purification Affinity purification

Isotype IgG

Recommend Usage

- Flow Cytometry (1:100)
- Immunocytochemistry (1:50-1:200)
- Immunofluorescence (1:50-1:200)
- Immunohistochemistry (1:100-1:500)
- Immunoprecipitation (1:40)
- Western Blot (1:500-1:1000)

The optimal working dilution should be determined by the end user.

| | |
|---------------------|---|
| Storage Buffer | In PBS, 150 mM NaCl, pH 7.4 (50% glycerol, 0.02% sodium azide). |
| Storage Instruction | Store at -20°C for one year. After reconstitution, at 4°C for one month. It can also be aliquotted and stored frozen at -20°C for a longer time. Avoid repeated freezing and thawing. |
| Note | This product contains sodium azide: a POISONOUS AND HAZARDOUS SUBSTANCE which should be handled by trained staff only. |

Applications

- Western Blot (Cell lysate)

Western Blot analysis of A375 cell lysate with S100A4 monoclonal antibody, clone GFG-19 (Cat # MAB20688).

- Immunohistochemistry
- Immunocytochemistry
- Immunofluorescence
- Immunoprecipitation
- Flow Cytometry

Gene Info — S100A4

| | |
|--------------------|--|
| Entrez GeneID | 6275 |
| Protein Accession# | P26447 |
| Gene Name | S100A4 |
| Gene Alias | 18A2, 42A, CAPL, FSP1, MTS1, P9KA, PEL98 |
| Gene Description | S100 calcium binding protein A4 |
| Omim ID | 114210 |
| Gene Ontology | Hyperlink |

Gene Summary

The protein encoded by this gene is a member of the S100 family of proteins containing 2 EF-hand calcium-binding motifs. S100 proteins are localized in the cytoplasm and/or nucleus of a wide range of cells, and involved in the regulation of a number of cellular processes such as cell cycle progression and differentiation. S100 genes include at least 13 members which are located as a cluster on chromosome 1q21. This protein may function in motility, invasion, and tubulin polymerization. Chromosomal rearrangements and altered expression of this gene have been implicated in tumor metastasis. Multiple alternatively spliced variants, encoding the same protein, have been identified. [provided by RefSeq]

Other Designations

OTTHUMP00000015467|OTTHUMP00000015468|OTTHUMP00000015469|OTTHUMP00000032895|S100 calcium binding protein A4 (calcium protein, calvasculin, metastasin, murine placental homolog)|S100 calcium-binding protein A4|S100 calcium-binding protein A4 (calcium prote

Disease

- [Dermatitis](#)
- [Genetic Predisposition to Disease](#)
- [Liver Cirrhosis](#)