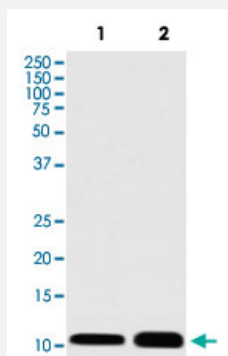


# S100A1 monoclonal antibody, clone ABCF-19

Catalog # MAB20686      Size 100 uL

## Applications



### Western Blot

Western Blot analysis of Lane 1: human skeletal muscle tissue and Lane 2: RAW 2647 cell lysates with S100A1 monoclonal antibody, clone ABCF-19 (Cat # MAB20686).

## Specification

<b>Product Description</b>	Rabbit monoclonal antibody raised against synthetic peptide of human S100A1.
<b>Immunogen</b>	A synthetic peptide corresponding to human S100A1.
<b>Host</b>	Rabbit
<b>Theoretical MW (kDa)</b>	10.546
<b>Reactivity</b>	Human
<b>Form</b>	Liquid
<b>Purification</b>	Affinity purification
<b>Isotype</b>	IgG
<b>Recommend Usage</b>	Flow Cytometry (1:50) Immunohistochemistry (1:100-1:500) Immunoprecipitation (1:50) Western Blot (1:500-1:1000) The optimal working dilution should be determined by the end user.

Storage Buffer	In PBS, 150 mM NaCl, pH 7.4 (50% glycerol, 0.02% sodium azide).
Storage Instruction	Store at -20°C for one year. After reconstitution, at 4°C for one month. It can also be aliquotted and stored frozen at -20°C for a longer time. Avoid repeated freezing and thawing.
Note	This product contains sodium azide: a POISONOUS AND HAZARDOUS SUBSTANCE which should be handled by trained staff only.

## Applications

- Western Blot

Western Blot analysis of Lane 1: human skeletal muscle tissue and Lane 2: RAW 2647 cell lysates with S100A1 monoclonal antibody, clone ABCF-19 (Cat # MAB20686).

- Immunohistochemistry

- Immunoprecipitation

- Flow Cytometry

## Gene Info — S100A1

Entrez GeneID	<a href="#">6271</a>
Protein Accession#	<a href="#">P23297</a>
Gene Name	S100A1
Gene Alias	S100, S100-alpha, S100A
Gene Description	S100 calcium binding protein A1
Omim ID	<a href="#">176940</a>
Gene Ontology	<a href="#">Hyperlink</a>
Gene Summary	<p>The protein encoded by this gene is a member of the S100 family of proteins containing 2 EF-hand calcium-binding motifs. S100 proteins are localized in the cytoplasm and/or nucleus of a wide range of cells, and involved in the regulation of a number of cellular processes such as cell cycle progression and differentiation. S100 genes include at least 13 members which are located as a cluster on chromosome 1q21. This protein may function in stimulation of Ca<sup>2+</sup>-induced Ca<sup>2+</sup> release, inhibition of microtubule assembly, and inhibition of protein kinase C-mediated phosphorylation. Reduced expression of this protein has been implicated in cardiomyopathies. [provided by RefSeq]</p>

**Other Designations**

OTTHUMP00000035100|S100 alpha|S100 calcium-binding protein A1|S100 protein, alpha polypeptide

**Disease**

- [Breast cancer](#)
- [Breast Neoplasms](#)
- [Dermatitis](#)
- [DNA Damage](#)
- [Genetic Predisposition to Disease](#)