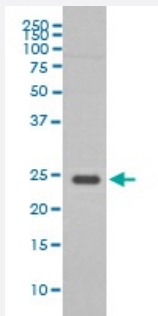


RAB9A monoclonal antibody, clone DIA-18

Catalog # MAB20649 Size 100 uL

Applications



Western Blot (Cell lysate)

Western Blot analysis of HepG2 cell lysate using RAB9A monoclonal antibody, clone DIA-18.

Specification

Product Description Rabbit monoclonal antibody raised against synthetic peptide of human RAB9A.

Immunogen A synthetic peptide corresponding to human RAB9A.

Host Rabbit

Reactivity Human

Form Liquid

Purification Affinity purification

Isotype IgG

Recommend Usage
Immunocytochemistry (1:50-1:200)
Immunofluorescence (1:50-1:200)
Western Blot (1:500-1:2000)
The optimal working dilution should be determined by the end user.

Storage Buffer In PBS, 150 mM NaCl, pH 7.4 (50% glycerol, 0.02% sodium azide).

Storage Instruction Store at -20°C for one year. After reconstitution, at 4°C for one month. It can also be aliquotted and stored frozen at -20°C for a longer time. Avoid repeated freezing and thawing.

Note

This product contains sodium azide: a POISONOUS AND HAZARDOUS SUBSTANCE which should be handled by trained staff only.

Applications

- Western Blot (Cell lysate)

Western Blot analysis of HepG2 cell lysate using RAB9A monoclonal antibody, clone DIA-18.

- Immunocytochemistry

- Immunofluorescence

Gene Info — RAB9A

Entrez GeneID	9367
---------------	----------------------

Protein Accession#	P51151
--------------------	------------------------

Gene Name	RAB9A
-----------	-------

Gene Alias	RAB9
------------	------

Gene Description	RAB9A, member RAS oncogene family
------------------	-----------------------------------

Omim ID	300284
---------	------------------------

Gene Ontology	Hyperlink
---------------	---------------------------

Gene Summary	O
--------------	---

Other Designations	RAB9, member RAS oncogene family
--------------------	----------------------------------