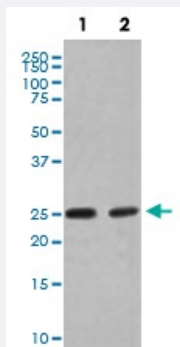


RAB4A monoclonal antibody, clone ACF-18

Catalog # MAB20646 Size 100 uL

Applications



Western Blot (Cell lysate)

Western Blot analysis of (1) SH-SY5Y cell lysate; (2) MCF-7 cell lysate using RAB4A monoclonal antibody, clone ACF-18.

Specification

Product Description Rabbit monoclonal antibody raised against synthetic peptide of human RAB4A.

Immunogen A synthetic peptide corresponding to human RAB4A.

Host Rabbit

Reactivity Human

Form Liquid

Purification Affinity purification

Isotype IgG

Recommend Usage

- Immunocytochemistry (1:50-1:200)
- Immunofluorescence (1:50-1:200)
- Immunoprecipitation (1:50)
- Western Blot (1:1000-1:2000)
- The optimal working dilution should be determined by the end user.

Storage Buffer In PBS, 150 mM NaCl, pH 7.4 (50% glycerol, 0.02% sodium azide).

Storage Instruction

Store at -20°C for one year. After reconstitution, at 4°C for one month. It can also be aliquotted and stored frozen at -20°C for a longer time. Avoid repeated freezing and thawing.

Note

This product contains sodium azide: a POISONOUS AND HAZARDOUS SUBSTANCE which should be handled by trained staff only.

Applications

- Western Blot (Cell lysate)

Western Blot analysis of (1) SH-SY5Y cell lysate; (2) MCF-7 cell lysate using RAB4A monoclonal antibody, clone ACF-18.

- Immunocytochemistry

- Immunofluorescence

- Immunoprecipitation

Gene Info — RAB4A

Entrez GeneID[5867](#)**Protein Accession#**[P20338](#)**Gene Name**

RAB4A

Gene Alias

HRES-1/RAB4, RAB4

Gene Description

RAB4A, member RAS oncogene family

Omim ID[179511](#)**Gene Ontology**[Hyperlink](#)**Gene Summary**

O

Other Designations

OTTHUMP00000035740|OTTHUMP00000042824|Oncogene RAB4|RAB4, member RAS oncogene family

Pathway

- [Endocytosis](#)