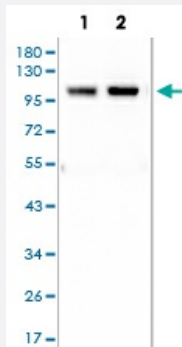


DLG4 monoclonal antibody, clone DAF-4

Catalog # MAB20635 Size 100 uL

Applications



Western Blot (Cell lysate)

Western Blot analysis using DLG4 monoclonal antibody, clone DAF-4.

Specification

Product Description Rabbit monoclonal antibody raised against synthetic peptide of human DLG4.

Immunogen A synthetic peptide corresponding to human DLG4.

Host Rabbit

Reactivity Human

Form Liquid

Purification Affinity purification

Isotype IgG

Recommend Usage

- Flow Cytometry (1:20)
- Immunocytochemistry (1:50-1:200)
- Immunofluorescence (1:50-1:200)
- Immunohistochemistry (1:50-1:200)
- Immunoprecipitation (1:20)
- Western Blot (1:500-1:2000)

The optimal working dilution should be determined by the end user.

Storage Buffer In PBS, 150 mM NaCl, pH 7.4 (50% glycerol, 0.02% sodium azide).

Storage Instruction

Store at -20°C for one year. After reconstitution, at 4°C for one month. It can also be aliquotted and stored frozen at -20°C for a longer time. Avoid repeated freezing and thawing.

Note

This product contains sodium azide: a POISONOUS AND HAZARDOUS SUBSTANCE which should be handled by trained staff only.

Applications

- Western Blot (Cell lysate)

Western Blot analysis using DLG4 monoclonal antibody, clone DAF-4.

- Immunohistochemistry (Formalin/PFA-fixed paraffin-embedded sections)

- Immunocytochemistry

- Immunofluorescence

- Immunoprecipitation

- Flow Cytometry

Gene Info — DLG4

Entrez GeneID[1742](#)**Protein Accession#**[P78352](#)**Gene Name**

DLG4

Gene Alias

FLJ97752, FLJ98574, PSD95, SAP-90, SAP90

Gene Description

discs, large homolog 4 (Drosophila)

Omim ID[602887](#)**Gene Ontology**[Hyperlink](#)**Gene Summary**

This gene encodes a member of the membrane-associated guanylate kinase (MAGUK) family. It heteromultimerizes with another MAGUK protein, DLG2, and is recruited into NMDA receptor and potassium channel clusters. These two MAGUK proteins may interact at postsynaptic sites to form a multimeric scaffold for the clustering of receptors, ion channels, and associated signaling proteins. Multiple transcript variants encoding different isoforms have been found for this gene. [provided by RefSeq]

Other Designations

Tax interaction protein 15|discs large homolog 4|post-synaptic density protein 95|synapse-associated protein 90

Disease

- [Cardiovascular Diseases](#)
- [Diabetes Mellitus](#)
- [Edema](#)
- [Genetic Predisposition to Disease](#)
- [Memory](#)
- [Schizophrenia](#)
- [Tobacco Use Disorder](#)