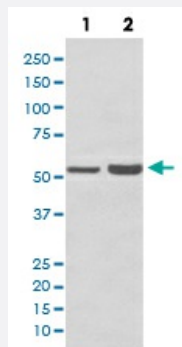


# PRPF19 monoclonal antibody, clone FEC-16

Catalog # MAB20633      Size 100 uL

## Applications



### Western Blot (Cell lysate)

Western Blot analysis of (1) HepG2 cell lysate, (2) NIH/3T3 cell lysate using PRPF19 monoclonal antibody, clone FEC-16.

## Specification

**Product Description** Rabbit monoclonal antibody raised against synthetic peptide of human PRPF19.

**Immunogen** A synthetic peptide corresponding to human PRPF19.

**Host** Rabbit

**Reactivity** Human, Mouse

**Form** Liquid

**Purification** Affinity purification

**Isotype** IgG

**Recommend Usage**

- Flow Cytometry (1:50)
- Immunocytochemistry (1:50-1:200)
- Immunofluorescence (1:50-1:200)
- Immunohistochemistry (1:50-1:200)
- Western Blot (1:500-1:2000)

The optimal working dilution should be determined by the end user.

**Storage Buffer** In PBS, 150 mM NaCl, pH 7.4 (50% glycerol, 0.02% sodium azide).

**Storage Instruction**

Store at -20°C for one year. After reconstitution, at 4°C for one month. It can also be aliquotted and stored frozen at -20°C for a longer time. Avoid repeated freezing and thawing.

**Note**

This product contains sodium azide: a POISONOUS AND HAZARDOUS SUBSTANCE which should be handled by trained staff only.

## Applications

- Western Blot (Cell lysate)

Western Blot analysis of (1) HepG2 cell lysate, (2) NIH/3T3 cell lysate using PRPF19 monoclonal antibody, clone FEC-16.

- Immunohistochemistry (Formalin/PFA-fixed paraffin-embedded sections)

- Immunocytochemistry

- Immunofluorescence

- Flow Cytometry

## Gene Info — PRPF19

**Entrez GeneID**[27339](#)**Protein Accession#**[Q9UMS4](#)**Gene Name**

PRPF19

**Gene Alias**

NMP200, PRP19, PSO4, SNEV, UBOX4, hPSO4

**Gene Description**

PRP19/PSO4 pre-mRNA processing factor 19 homolog (S. cerevisiae)

**Omim ID**[608330](#)**Gene Ontology**[Hyperlink](#)**Gene Summary**

PSO4 is the human homolog of yeast Pso4, a gene essential for cell survival and DNA repair (Beck et al., 2008 [PubMed 18263876]).[supplied by OMIM]

**Other Designations**

PRP19/PSO4 homolog|PRP19/PSO4 pre-mRNA processing factor 19 homolog|nuclear matrix protein NMP200 related to splicing factor PRP19

## Pathway

- [Ubiquitin mediated proteolysis](#)