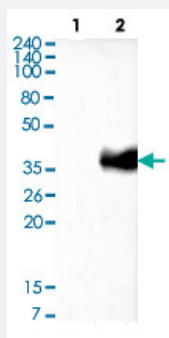


# WNT3A monoclonal antibody, clone 3A6

Catalog # MAB2063

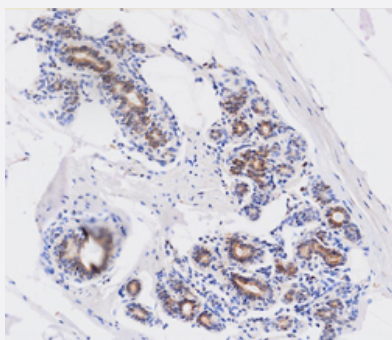
Size 100 uL

## Applications



### Western Blot

Western blot analysis of Lane 1: 293T cell lysate, Lane 2: Wnt3a Transfected 293T cell lysate.



### Immunohistochemistry (Formalin/PFA-fixed paraffin-embedded sections)

Immunohistochemistry of human breast cancer tissue were incubated with WNT3A monoclonal antibody, clone 3A6 (1:50) for 2 hours at room temperature. Antigen retrieval was performed in 0.1 M sodium citrate buffer and detected using Diaminobenzidine (DAB).

## Specification

Product Description	Mouse monoclonal antibody raised against partial recombinant WNT3A.
Immunogen	Recombinant protein corresponding to amino acids 19-352 of human WNT3A.
Host	Mouse
Reactivity	Human
Form	Liquid
Purification	Protein G purification
Isotype	IgG2a, kappa

<b>Quality Control Testing</b>	Antibody Reactive Against Recombinant Protein.
<b>Recommend Usage</b>	ELISA Immunohistochemistry Western Blot The optimal working dilution should be determined by the end user.
<b>Storage Buffer</b>	In PBS, pH 7.4 (10% glycerol, 0.02% sodium azide).
<b>Storage Instruction</b>	Store at 2°C to 8°C for 1 week. For long term storage, aliquot and store at -20°C to -80°C. Aliquot to avoid repeated freezing and thawing.
<b>Note</b>	This product contains sodium azide: a POISONOUS AND HAZARDOUS SUBSTANCE which should be handled by trained staff only.

## Applications

- Western Blot

Western blot analysis of Lane 1: 293T cell lysate, Lane 2: Wnt3a Transfected 293T cell lysate.

- Immunohistochemistry (Formalin/PFA-fixed paraffin-embedded sections)

Immunohistochemistry of human breast cancer tissue were incubated with WNT3A monoclonal antibody, clone 3A6 (1:50) for 2 hours at room temperature. Antigen retrieval was performed in 0.1 M sodium citrate buffer and detected using Diaminobenzidine (DAB).

- Enzyme-linked Immunoabsorbent Assay

## Gene Info — WNT3A

<b>Entrez GeneID</b>	<a href="#">89780</a>
<b>Protein Accession#</b>	<a href="#">NP_149122</a>
<b>Gene Name</b>	WNT3A
<b>Gene Alias</b>	MGC119418, MGC119419, MGC119420
<b>Gene Description</b>	wingless-type MMTV integration site family, member 3A
<b>Omim ID</b>	<a href="#">606359</a>
<b>Gene Ontology</b>	<a href="#">Hyperlink</a>

## Gene Summary

The WNT gene family consists of structurally related genes which encode secreted signaling proteins. These proteins have been implicated in oncogenesis and in several developmental processes, including regulation of cell fate and patterning during embryogenesis. This gene is a member of the WNT gene family. It encodes a protein which shows 96% amino acid identity to mouse Wnt 3A protein, and 84% to human WNT3 protein, another WNT gene product. This gene is clustered with WNT14 gene, another family member, in chromosome 1q42 region. [provided by RefSeq]

## Other Designations

OTTHUMP00000035713

## Publication Reference

- [Human umbilical cord mesenchymal stem cells implantation accelerates cutaneous wound healing in diabetic rats via the Wnt signaling pathway.](#)

Han Y, Sun T, Han Y, Lin L, Liu C, Liu J, Yan G, Tao R.

European Journal of Medical Research 2019 Feb; 24(1):10.

Application: Cell Culture, Human, hUCMSCs

- [Wnt3a-mediated formation of phosphatidylinositol 4,5-bisphosphate regulates LRP6 phosphorylation.](#)

Pan W, Choi SC, Wang H, Qin Y, Volpicelli-Daley L, Swan L, Lucast L, Khoo C, Zhang X, Li L, Abrams CS, Sokol SY, Wu D.

Science 2008 Sep; 321(5894):1350.

- [Regulation of WNT3 and WNT3A mRNAs in human cancer cell lines NT2, MCF-7, and MKN45.](#)

Katoh M.

International Journal of Oncology 2002 Feb; 20(2):373.

- [Wnt family proteins are secreted and associated with the cell surface.](#)

Smolich BD, McMahon JA, McMahon AP, Papkoff J.

Molecular Biology of the Cell. 1993 Dec; 4(12):1267.

## Pathway

- [Basal cell carcinoma](#)
- [Hedgehog signaling pathway](#)
- [Melanogenesis](#)
- [Pathways in cancer](#)
- [Wnt signaling pathway](#)

## Disease

- [Cleft Lip](#)
- [Cleft Palate](#)
- [Genetic Predisposition to Disease](#)