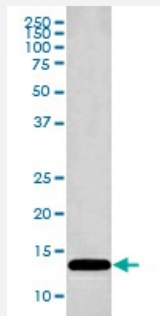


PFN1 monoclonal antibody, clone ABCD-16

Catalog # MAB20628 Size 100 uL

Applications



Western Blot (Cell lysate)

Western Blot analysis of Jurkat cell lysate using PFN1 monoclonal antibody, clone ABCD-16.

Specification

Product Description Rabbit monoclonal antibody raised against synthetic peptide of human PFN1.

Immunogen A synthetic peptide corresponding to human PFN1.

Host Rabbit

Reactivity Human

Form Liquid

Purification Affinity purification

Isotype IgG

Recommend Usage

- Flow Cytometry (1:200)
- Immunocytochemistry (1:50-1:200)
- Immunofluorescence (1:50-1:200)
- Immunohistochemistry (1:50-1:200)
- Immunoprecipitation (1:50)
- Western Blot (1:1000-1:5000)
- The optimal working dilution should be determined by the end user.

Storage Buffer In PBS, 150 mM NaCl, pH 7.4 (50% glycerol, 0.02% sodium azide).

Storage Instruction

Store at -20°C for one year. After reconstitution, at 4°C for one month. It can also be aliquotted and stored frozen at -20°C for a longer time. Avoid repeated freezing and thawing.

Note

This product contains sodium azide: a POISONOUS AND HAZARDOUS SUBSTANCE which should be handled by trained staff only.

Applications

- Western Blot (Cell lysate)

Western Blot analysis of Jurkat cell lysate using PFN1 monoclonal antibody, clone ABCD-16.

- Immunohistochemistry (Formalin/PFA-fixed paraffin-embedded sections)

- Immunocytochemistry

- Immunofluorescence

- Immunoprecipitation

- Flow Cytometry

Gene Info — PFN1

Entrez GeneID[5216](#)**Protein Accession#**[P07737](#)**Gene Name**

PFN1

Gene Alias

-

Gene Description

profilin 1

Omim ID[176610](#)**Gene Ontology**[Hyperlink](#)**Gene Summary**

The protein encoded by this gene is a ubiquitous actin monomer-binding protein belonging to the profilin family. It is thought to regulate actin polymerization in response to extracellular signals. Deletion of this gene is associated with Miller-Dieker syndrome. [provided by RefSeq]

Other Designations

-

Pathway

- [Regulation of actin cytoskeleton](#)