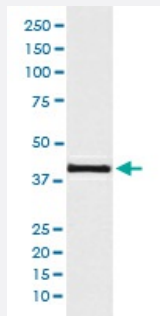


# AKT1S1 monoclonal antibody, clone ABIO-1

Catalog # MAB20615      Size 100 uL

## Applications



### Western Blot (Cell lysate)

Western Blot analysis of 293T cell lysate using AKT1S1 monoclonal antibody, clone ABIO-1.

## Specification

**Product Description** Rabbit monoclonal antibody raised against synthetic peptide of human AKT1S1.

**Immunogen** A synthetic peptide corresponding to human AKT1S1.

**Host** Rabbit

**Reactivity** Human

**Form** Liquid

**Purification** Affinity purification

**Isotype** IgG

**Recommend Usage**

- Flow Cytometry (1:50)
- Immunohistochemistry (1:50-1:200)
- Immunoprecipitation (1:50)
- Western Blot (1:500-1:2000)
- The optimal working dilution should be determined by the end user.

**Storage Buffer** In PBS, 150 mM NaCl, pH 7.4 (50% glycerol, 0.02% sodium azide).

**Storage Instruction**

Store at -20°C for one year. After reconstitution, at 4°C for one month. It can also be aliquotted and stored frozen at -20°C for a longer time. Avoid repeated freezing and thawing.

**Note**

This product contains sodium azide: a POISONOUS AND HAZARDOUS SUBSTANCE which should be handled by trained staff only.

## Applications

- Western Blot (Cell lysate)

Western Blot analysis of 293T cell lysate using AKT1S1 monoclonal antibody, clone ABIO-1.

- Immunohistochemistry (Formalin/PFA-fixed paraffin-embedded sections)

- Immunoprecipitation

- Flow Cytometry

## Gene Info — AKT1S1

**Entrez GeneID** [84335](#)

**Protein Accession#** [Q96B36](#)

**Gene Name** AKT1S1

**Gene Alias** Lobe, MGC2865, PRAS40

**Gene Description** AKT1 substrate 1 (proline-rich)

**Omim ID** [610221](#)

**Gene Ontology** [Hyperlink](#)

**Gene Summary** AKT1S1 is a proline-rich substrate of AKT (MIM 164730) that binds 14-3-3 protein (see YWHAH, MIM 113508) when phosphorylated (Kovacina et al., 2003 [PubMed 12524439]).[supplied by OMIM]

**Other Designations** OTTHUMP00000196757|OTTHUMP00000196758|OTTHUMP00000196759|OTTHUMP00000196760|proline-rich Akt substrate, 40 kDa