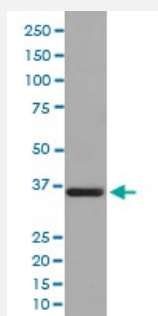


PPP2CB monoclonal antibody, clone ECI-16

Catalog # MAB20611 Size 100 uL

Applications



Western Blot (Cell lysate)

Western Blot analysis of T-47D cell lysate using PPP2CB monoclonal antibody, clone ECI-16.

Specification

Product Description Rabbit monoclonal antibody raised against synthetic peptide of human PPP2CB.

Immunogen A synthetic peptide corresponding to human PPP2CB.

Host Rabbit

Reactivity Human

Form Liquid

Purification Affinity purification

Isotype IgG

Recommend Usage

- Immunocytochemistry (1:50-1:200)
- Immunofluorescence (1:50-1:200)
- Immunohistochemistry (1:50-1:200)
- Immunoprecipitation (1:50)
- Western Blot (1:500-1:2000)
- The optimal working dilution should be determined by the end user.

Storage Buffer In PBS, 150 mM NaCl, pH 7.4 (50% glycerol, 0.02% sodium azide).

Storage Instruction

Store at -20°C for one year. After reconstitution, at 4°C for one month. It can also be aliquotted and stored frozen at -20°C for a longer time. Avoid repeated freezing and thawing.

Note

This product contains sodium azide: a POISONOUS AND HAZARDOUS SUBSTANCE which should be handled by trained staff only.

Applications

- Western Blot (Cell lysate)

Western Blot analysis of T-47D cell lysate using PPP2CB monoclonal antibody, clone ECI-16.

- Immunohistochemistry (Formalin/PFA-fixed paraffin-embedded sections)

- Immunocytochemistry

- Immunofluorescence

- Immunoprecipitation

Gene Info — PPP2CB

Entrez GeneID[5516](#)**Protein Accession#**[P62714](#)**Gene Name**

PPP2CB

Gene Alias

PP2CB

Gene Description

protein phosphatase 2 (formerly 2A), catalytic subunit, beta isoform

Omim ID[176916](#)**Gene Ontology**[Hyperlink](#)**Gene Summary**

This gene encodes the phosphatase 2A catalytic subunit. Protein phosphatase 2A is one of the four major Ser/Thr phosphatases, and it is implicated in the negative control of cell growth and division. It consists of a common heteromeric core enzyme, which is composed of a catalytic subunit and a constant regulatory subunit, that associates with a variety of regulatory subunits. This gene encodes a beta isoform of the catalytic subunit. Two transcript variants encoding the same protein have been identified for this gene. [provided by RefSeq]

Other Designations

PP2A-beta|protein phosphatase 2, catalytic subunit, beta isoform|protein phosphatase type 2A catalytic subunit|serine/threonine protein phosphatase 2A, catalytic subunit, beta isoform

Pathway

- [Long-term depression](#)
- [TGF-beta signaling pathway](#)
- [Tight junction](#)
- [Wnt signaling pathway](#)