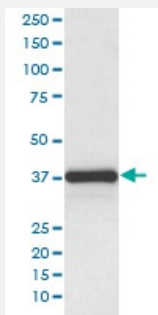


PDPN monoclonal antibody, clone AACC-16

Catalog # MAB20609 Size 100 uL

Applications



Western Blot (Cell lysate)

Western Blot analysis of human placenta lysate using PDPN monoclonal antibody, clone AACC-16.

Specification

Product Description	Rabbit monoclonal antibody raised against synthetic peptide of human PDPN.
Immunogen	A synthetic peptide corresponding to human PDPN.
Host	Rabbit
Reactivity	Human
Form	Liquid
Purification	Affinity purification
Isotype	IgG
Recommend Usage	Western Blot (1:500-1:2000) The optimal working dilution should be determined by the end user.
Storage Buffer	In PBS, 150 mM NaCl, pH 7.4 (50% glycerol, 0.02% sodium azide).
Storage Instruction	Store at -20°C for one year. After reconstitution, at 4°C for one month. It can also be aliquotted and stored frozen at -20°C for a longer time. Avoid repeated freezing and thawing.

Note

This product contains sodium azide: a POISONOUS AND HAZARDOUS SUBSTANCE which should be handled by trained staff only.

Applications

- Western Blot (Cell lysate)

Western Blot analysis of human placenta lysate using PDPN monoclonal antibody, clone AACC-16.

Gene Info — PDPN

Entrez GeneID [10630](#)

Protein Accession# [Q86YL7](#)

Gene Name PDPN

Gene Alias AGGRUS, GP36, GP40, Gp38, HT1A-1, OTS8, PA2.26, T1A, T1A-2

Gene Description podoplanin

Omim ID [608863](#)

Gene Ontology [Hyperlink](#)

Gene Summary This gene encodes a type-I integral membrane glycoprotein with diverse distribution in human tissues. The physiological function of this protein may be related to its mucin-type character. The homologous protein in other species has been described as a differentiation antigen and influenza-virus receptor. The specific function of this protein has not been determined but it has been proposed as a marker of lung injury. Alternatively spliced transcript variants encoding different isoforms have been identified. [provided by RefSeq]

Other Designations OTTHUMP00000009640|OTTHUMP00000044504|glycoprotein, 36-KD|hT1alpha-1|hT1alpha-2|lung type I cell membrane associated glycoprotein|lung type-I cell membrane-associated glycoprotein|lung type-I cell membrane-associated glycoprotein (T1A-2)

Disease

- [Genetic Predisposition to Disease](#)
- [Lymphedema](#)
- [Ovarian Neoplasms](#)
- [Tobacco Use Disorder](#)