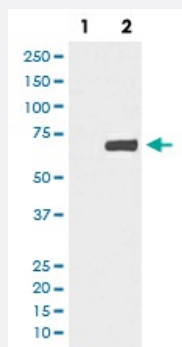


YAP1 (phospho S127) monoclonal antibody, clone GAB-25

Catalog # MAB20588 Size 100 uL

Applications



Western Blot (Cell lysate)

Western Blot analysis of (1) HeLa cell lysate, (2) HeLa cell lysate treated with FBS+calyculin A using YAP1 (phospho S127) monoclonal antibody, clone GAB-25.

Specification

| | |
|----------------------------|---|
| Product Description | Rabbit monoclonal antibody raised against synthetic phosphopeptide of human YAP1. |
| Immunogen | A synthetic phosphopeptide corresponding to residues surrounding S127 of human YAP1. |
| Host | Rabbit |
| Reactivity | Human |
| Form | Liquid |
| Purification | Affinity purification |
| Isotype | IgG |
| Recommend Usage | Immunohistochemistry (1:50-1:200) Western Blot (1:5000-1:20000) The optimal working dilution should be determined by the end user. |
| Storage Buffer | In PBS, 150 mM NaCl, pH 7.4 (50% glycerol, 0.4-0.5 mg/mL BSA, 0.02% sodium azide). |
| Storage Instruction | Store at -20°C for one year. After reconstitution, at 4°C for one month. It can also be aliquotted and stored frozen at -20°C for a longer time. Avoid repeated freezing and thawing. |

Note

This product contains sodium azide: a POISONOUS AND HAZARDOUS SUBSTANCE which should be handled by trained staff only.

Applications

- Western Blot (Cell lysate)

Western Blot analysis of (1) HeLa cell lysate, (2) HeLa cell lysate treated with FBS+calyculin A using YAP1 (phospho S127) monoclonal antibody, clone GAB-25.

- Immunohistochemistry (Formalin/PFA-fixed paraffin-embedded sections)

Gene Info — YAP1

Entrez GeneID [10413](#)

Protein Accession# [P46937](#)

Gene Name YAP1

Gene Alias YAP, YAP2, YAP65, YKI

Gene Description Yes-associated protein 1, 65kDa

Omim ID [606608](#)

Gene Ontology [Hyperlink](#)

Gene Summary This gene encodes the human ortholog of chicken YAP protein which binds to the SH3 domain of the Yes proto-oncogene product. This protein contains a WW domain that is found in various structural, regulatory and signaling molecules in yeast, nematode, and mammals, and may be involved in protein-protein interaction. [provided by RefSeq]

Other Designations yes-associated protein 2

Disease

- [Tobacco Use Disorder](#)