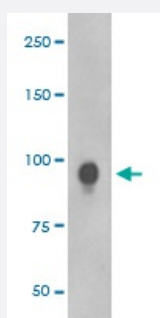


# RPS6KA1 p90 (phospho T359/S363) monoclonal antibody, clone CFA-18

Catalog # MAB20566      Size 100 uL

## Applications



### Western Blot (Cell lysate)

Western Blot analysis of K-562 cell lysate treated with EGF using RPS6KA1 p90 (phospho T359/S363) monoclonal antibody, clone CFA-18.

## Specification

<b>Product Description</b>	Rabbit monoclonal antibody raised against synthetic phosphopeptide of human RPS6KA1.
<b>Immunogen</b>	A synthetic phosphopeptide corresponding to residues surrounding T359/S363 of human RPS6KA1.
<b>Host</b>	Rabbit
<b>Reactivity</b>	Human
<b>Form</b>	Liquid
<b>Purification</b>	Affinity purification
<b>Isotype</b>	IgG
<b>Recommend Usage</b>	Immunocytochemistry (1:50-1:200) Immunofluorescence (1:50-1:200) Immunohistochemistry (1:50-1:200) Immunoprecipitation (1:50) Western Blot (1:1000-1:2000) The optimal working dilution should be determined by the end user.

<b>Storage Buffer</b>	In PBS, 150 mM NaCl, pH 7.4 (50% glycerol, 0.4-0.5 mg/mL BSA, 0.02% sodium azide).
<b>Storage Instruction</b>	Store at -20°C for one year. After reconstitution, at 4°C for one month. It can also be aliquotted and stored frozen at -20°C for a longer time. Avoid repeated freezing and thawing.
<b>Note</b>	This product contains sodium azide: a POISONOUS AND HAZARDOUS SUBSTANCE which should be handled by trained staff only.

## Applications

- Western Blot (Cell lysate)

Western Blot analysis of K-562 cell lysate treated with EGF using RPS6KA1 p90 (phospho T359/S363) monoclonal antibody, clone CFA-18.

- Immunohistochemistry (Formalin/PFA-fixed paraffin-embedded sections)

- Immunocytochemistry

- Immunofluorescence

- Immunoprecipitation

## Gene Info — RPS6KA1

<b>Entrez GeneID</b>	<a href="#">6195</a>
<b>Protein Accession#</b>	<a href="#">Q15418</a>
<b>Gene Name</b>	RPS6KA1
<b>Gene Alias</b>	HU-1, MAPKAPK1A, RSK, RSK1
<b>Gene Description</b>	ribosomal protein S6 kinase, 90kDa, polypeptide 1
<b>Omim ID</b>	<a href="#">601684</a>
<b>Gene Ontology</b>	<a href="#">Hyperlink</a>

<b>Gene Summary</b>	This gene encodes a member of the RSK (ribosomal S6 kinase) family of serine/threonine kinases. This kinase contains 2 nonidentical kinase catalytic domains and phosphorylates various substrates, including members of the mitogen-activated kinase (MAPK) signalling pathway. The activity of this protein has been implicated in controlling cell growth and differentiation. Alternate transcriptional splice variants, encoding different isoforms, have been characterized. [provided by RefSeq]
---------------------	---------------------------------------------------------------------------------------------------------------------------------------------------------------------------------------------------------------------------------------------------------------------------------------------------------------------------------------------------------------------------------------------------------------------------------------------------------------------------------------------------------

**Other Designations**

OTTHUMP00000004113|S6K-alpha 1|dJ590P13.1 (ribosomal protein S6 kinase, 90kD, polypeptide 1)|p90-RSK 1|ribosomal protein S6 kinase alpha 1|ribosomal protein S6 kinase, 90kD, 1|ribosomal protein S6 kinase, 90kD, polypeptide 1

**Pathway**

- [Long-term potentiation](#)
- [MAPK signaling pathway](#)
- [mTOR signaling pathway](#)
- [Neurotrophin signaling pathway](#)

**Disease**

- [Breast cancer](#)
- [Breast Neoplasms](#)
- [Cardiovascular Diseases](#)
- [Diabetes Mellitus](#)
- [Edema](#)
- [Genetic Predisposition to Disease](#)
- [Kidney Failure](#)