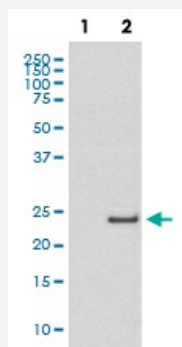


# CDC42 (phospho S71) monoclonal antibody, clone IBB-3

Catalog # MAB20559      Size 100 uL

## Applications



### Western Blot (Cell lysate)

Western Blot analysis of (1) A431 cell lysate treated with LP, (2) A431 cell lysate using CDC42 (phospho S71) monoclonal antibody, clone IBB-3.

## Specification

<b>Product Description</b>	Rabbit monoclonal antibody raised against synthetic phosphopeptide of human CDC42.
<b>Immunogen</b>	A synthetic phosphopeptide corresponding to residues surrounding S71 of human CDC42.
<b>Host</b>	Rabbit
<b>Reactivity</b>	Human
<b>Form</b>	Liquid
<b>Purification</b>	Affinity purification
<b>Isotype</b>	IgG
<b>Recommend Usage</b>	Western Blot (1:500-1:1000) The optimal working dilution should be determined by the end user.
<b>Storage Buffer</b>	In PBS, 150 mM NaCl, pH 7.4 (50% glycerol, 0.4-0.5 mg/mL BSA, 0.02% sodium azide).
<b>Storage Instruction</b>	Store at -20°C for one year. After reconstitution, at 4°C for one month. It can also be aliquotted and stored frozen at -20°C for a longer time. Avoid repeated freezing and thawing.

## Note

This product contains sodium azide: a POISONOUS AND HAZARDOUS SUBSTANCE which should be handled by trained staff only.

## Applications

- Western Blot (Cell lysate)

Western Blot analysis of (1) A431 cell lysate treated with LP, (2) A431 cell lysate using CDC42 (phospho S71) monoclonal antibody, clone IBB-3.

## Gene Info — CDC42

Entrez GeneID [998](#)

Protein Accession# [P60953](#)

Gene Name CDC42

Gene Alias CDC42Hs, G25K

Gene Description cell division cycle 42 (GTP binding protein, 25kDa)

Omim ID [116952](#)

Gene Ontology [Hyperlink](#)

**Gene Summary** The protein encoded by this gene is a small GTPase of the Rho-subfamily, which regulates signaling pathways that control diverse cellular functions including cell morphology, migration, endocytosis and cell cycle progression. This protein is highly similar to *Saccharomyces cerevisiae* Cdc 42, and is able to complement the yeast *cdc42-1* mutant. The product of oncogene *Dbl* was reported to specifically catalyze the dissociation of GDP from this protein. This protein could regulate actin polymerization through its direct binding to Neural Wiskott-Aldrich syndrome protein (N-WASP), which subsequently activates Arp2/3 complex. Alternative splicing of this gene results in multiple transcript variants. [provided by RefSeq]

**Other Designations** GTP-binding protein, 25kD|OTTHUMP00000002834|OTTHUMP00000002926|cell division cycle 42|cell division cycle 42 (GTP binding protein, 25kD)|cell division cycle 42 (GTP-binding protein, 25kD)|dJ224A6.1.1 (cell division cycle 42 (GTP-binding protein, 25kD))|d

## Pathway

- [Adherens junction](#)
- [Axon guidance](#)

- [Chemokine signaling pathway](#)
- [Endocytosis](#)
- [Epithelial cell signaling in Helicobacter pylori infection](#)
- [Fc gamma R-mediated phagocytosis](#)
- [Focal adhesion](#)
- [GnRH signaling pathway](#)
- [Leukocyte transendothelial migration](#)
- [MAPK signaling pathway](#)
- [Neurotrophin signaling pathway](#)
- [Pancreatic cancer](#)
- [Pathogenic Escherichia coli infection - EHEC](#)
- [Pathways in cancer](#)
- [Regulation of actin cytoskeleton](#)
- [Renal cell carcinoma](#)
- [T cell receptor signaling pathway](#)
- [Tight junction](#)
- [VEGF signaling pathway](#)

## Disease

- [Genetic Predisposition to Disease](#)
- [Hepatitis B](#)
- [HIV Infections](#)
- [Multiple Sclerosis](#)
- [Parkinson disease](#)