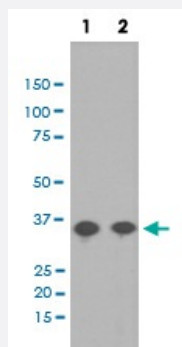


PPP2CA (phospho Y307) monoclonal antibody, clone AAA-16

Catalog # MAB20557

Size 100 uL

Applications



Western Blot (Cell lysate)

Western Blot analysis of (1) Rat kidney lysate, (2) A431 cell lysate treated with EGF using PPP2CA (phospho Y307) monoclonal antibody, clone AAA-16.

Specification

Product Description	Rabbit monoclonal antibody raised against synthetic phosphopeptide of human PPP2CA.
Immunogen	A synthetic phosphopeptide corresponding to residues surrounding Y307 of human PPP2CA.
Host	Rabbit
Reactivity	Human, Rat
Form	Liquid
Purification	Affinity purification
Isotype	IgG
Recommend Usage	Immunocytochemistry (1:50-1:200) Immunofluorescence (1:50-1:200) Immunohistochemistry (1:50-1:200) Immunoprecipitation (1:50) Western Blot (1:500-1:2000) The optimal working dilution should be determined by the end user.
Storage Buffer	In PBS, 150 mM NaCl, pH 7.4 (50% glycerol, 0.4-0.5 mg/mL BSA, 0.02% sodium azide).

Storage Instruction

Store at -20°C for one year. After reconstitution, at 4°C for one month. It can also be aliquotted and stored frozen at -20°C for a longer time. Avoid repeated freezing and thawing.

Note

This product contains sodium azide: a POISONOUS AND HAZARDOUS SUBSTANCE which should be handled by trained staff only.

Applications

- Western Blot (Cell lysate)

Western Blot analysis of (1) Rat kidney lysate, (2) A431 cell lysate treated with EGF using PPP2CA (phospho Y307) monoclonal antibody, clone AAA-16.

- Immunohistochemistry (Formalin/PFA-fixed paraffin-embedded sections)

- Immunocytochemistry

- Immunofluorescence

- Immunoprecipitation

Gene Info — PPP2CA

Entrez GeneID[5515](#)**Protein Accession#**[P67775](#)**Gene Name**

PPP2CA

Gene Alias

PP2Ac, PP2CA, RP-C

Gene Description

protein phosphatase 2 (formerly 2A), catalytic subunit, alpha isoform

Omim ID[176915](#)**Gene Ontology**[Hyperlink](#)**Gene Summary**

This gene encodes the phosphatase 2A catalytic subunit. Protein phosphatase 2A is one of the four major Ser/Thr phosphatases, and it is implicated in the negative control of cell growth and division. It consists of a common heteromeric core enzyme, which is composed of a catalytic subunit and a constant regulatory subunit, that associates with a variety of regulatory subunits. This gene encodes an alpha isoform of the catalytic subunit. [provided by RefSeq]

Other Designations

PP2A-alpha|protein phosphatase 2, catalytic subunit, alpha isoform|replication protein C|serine/threonine protein phosphatase 2A, catalytic subunit, alpha isoform|serine/threonine-protein phosphatase 2A catalytic subunit alpha isoform

Pathway

- [Long-term depression](#)
- [TGF-beta signaling pathway](#)
- [Tight junction](#)
- [Wnt signaling pathway](#)

Disease

- [Genetic Predisposition to Disease](#)
- [Narcolepsy](#)