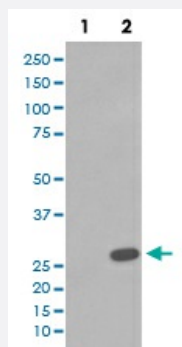


HSPB1 (phospho S78) monoclonal antibody, clone IBC-8

Catalog # MAB20528

Size 100 uL

Applications



Western Blot (Cell lysate)

Western Blot analysis of (1) A431 cell lysate, (2) A431 cell lysate treated with Anisomycin using HSPB1 (phospho S78) monoclonal antibody, clone IBC-8.

Specification

Product Description	Rabbit monoclonal antibody raised against synthetic phosphopeptide of human HSPB1.
Immunogen	A synthetic phosphopeptide corresponding to residues surrounding S78 of human HSPB1.
Host	Rabbit
Reactivity	Human
Form	Liquid
Purification	Affinity purification
Isotype	IgG
Recommend Usage	Immunocytochemistry (1:50-1:200) Immunofluorescence (1:50-1:200) Immunohistochemistry (1:50-1:200) Immunoprecipitation (1:50) Western Blot (1:500-1:2000) The optimal working dilution should be determined by the end user.
Storage Buffer	In PBS, 150 mM NaCl, pH 7.4 (50% glycerol, 0.4-0.5 mg/mL BSA, 0.02% sodium azide).

Storage Instruction

Store at -20°C for one year. After reconstitution, at 4°C for one month. It can also be aliquotted and stored frozen at -20°C for a longer time. Avoid repeated freezing and thawing.

Note

This product contains sodium azide: a POISONOUS AND HAZARDOUS SUBSTANCE which should be handled by trained staff only.

Applications

- Western Blot (Cell lysate)

Western Blot analysis of (1) A431 cell lysate, (2) A431 cell lysate treated with Anisomycin using HSPB1 (phospho S78) monoclonal antibody, clone IBC-8.

- Immunohistochemistry (Formalin/PFA-fixed paraffin-embedded sections)

- Immunocytochemistry

- Immunofluorescence

- Immunoprecipitation

Gene Info — HSPB1

Entrez GeneID[3315](#)**Protein Accession#**[P04792](#)**Gene Name**

HSPB1

Gene Alias

CMT2F, DKFZp586P1322, HMN2B, HS.76067, HSP27, HSP28, Hsp25, SRP27

Gene Description

heat shock 27kDa protein 1

Omim ID[602195](#) [606595](#) [608634](#)**Gene Ontology**[Hyperlink](#)**Gene Summary**

The protein encoded by this gene is induced by environmental stress and developmental changes. The encoded protein is involved in stress resistance and actin organization and translocates from the cytoplasm to the nucleus upon stress induction. Defects in this gene are a cause of Charcot-Marie-Tooth disease type 2F (CMT2F) and distal hereditary motor neuropathy (dHMN). [provided by RefSeq]

Other Designations

OTTHUMP00000024846|estrogen-regulated 24 kDa protein|heat shock 27kD protein 1|heat shock protein beta-1|stress-responsive protein 27

Pathway

- [MAPK signaling pathway](#)
- [VEGF signaling pathway](#)

Disease

- [Adenocarcinoma](#)
- [Carcinoma](#)
- [Charcot-Marie-Tooth Disease](#)
- [Diabetic Nephropathies](#)
- [Genetic Predisposition to Disease](#)
- [Lung Neoplasms](#)
- [Small Cell Lung Carcinoma](#)