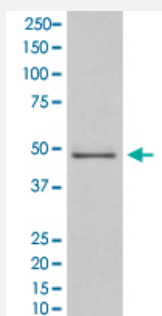


MAP2K5 monoclonal antibody, clone HCE-13

Catalog # MAB20481

Size 100 uL

Applications



Western Blot (Cell lysate)

Western Blot analysis of HeLa cell lysate with MAP2K5 monoclonal antibody, clone HCE-13 (Cat # MAB20481).

Specification

Product Description Rabbit monoclonal antibody raised against synthetic peptide of human MAP2K5.

Immunogen A synthetic peptide corresponding to human MAP2K5.

Host Rabbit

Theoretical MW (kDa) 50.112

Reactivity Human

Form Liquid

Purification Affinity purification

Isotype IgG

Recommend Usage
Immunocytochemistry (1:50-1:200)
Immunofluorescence (1:50-1:200)
Western Blot (1:1000-1:2000)
The optimal working dilution should be determined by the end user.

Storage Buffer In PBS, 150 mM NaCl, pH 7.4 (50% glycerol, 0.02% sodium azide).

Storage Instruction

Store at -20°C for one year. After reconstitution, at 4°C for one month. It can also be aliquotted and stored frozen at -20°C for a longer time. Avoid repeated freezing and thawing.

Note

This product contains sodium azide: a POISONOUS AND HAZARDOUS SUBSTANCE which should be handled by trained staff only.

Applications

- Western Blot (Cell lysate)

Western Blot analysis of HeLa cell lysate with MAP2K5 monoclonal antibody, clone HCE-13 (Cat # MAB20481).

- Immunocytochemistry

- Immunofluorescence

Gene Info — MAP2K5

Entrez GeneID[5607](#)**Protein Accession#**[Q13163](#)**Gene Name**

MAP2K5

Gene Alias

HsT17454, MAPKK5, MEK5, PRKMK5

Gene Description

mitogen-activated protein kinase kinase 5

Omim ID[602520](#)**Gene Ontology**[Hyperlink](#)**Gene Summary**

The protein encoded by this gene is a dual specificity protein kinase that belongs to the MAP kinase family. This kinase specifically interacts with and activates MAPK7/ERK5. This kinase itself can be phosphorylated and activated by MAP3K3/MEKK3, as well as by atypical protein kinase C isoforms (aPKCs). The signal cascade mediated by this kinase is involved in growth factor stimulated cell proliferation and muscle cell differentiation. Four alternatively spliced transcript variants of this gene encoding distinct isoforms have been described. [provided by RefSeq]

Other Designations

MAP kinase kinase MEK5b|MAPK/ERK kinase 5|dual specificity mitogen-activated protein kinase kinase 5

Pathway

- [Gap junction](#)
- [MAPK signaling pathway](#)
- [Neurotrophin signaling pathway](#)

Disease

- [Attention Deficit Disorder with Hyperactivity](#)
- [Cardiovascular Diseases](#)
- [Diabetes Mellitus](#)
- [Edema](#)
- [Genetic Predisposition to Disease](#)
- [Neuropsychological Tests](#)
- [Nocturnal Myoclonus Syndrome](#)
- [Obsessive-Compulsive Disorder](#)
- [Restless Legs Syndrome](#)
- [Tourette Syndrome](#)