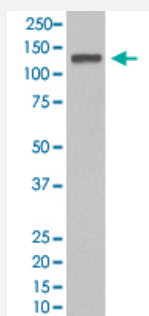


MCM2 monoclonal antibody, clone BCA-13

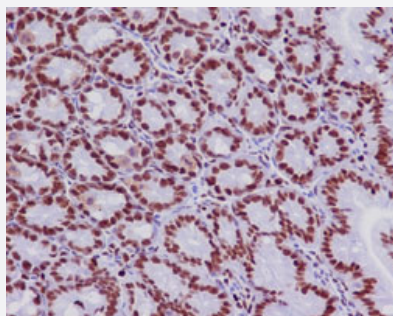
Catalog # MAB20472 Size 100 uL

Applications



Western Blot (Cell lysate)

Western Blot analysis of HeLa cell lysate with MCM2 monoclonal antibody, clone BCA-13 (Cat # MAB20472).



Immunohistochemistry (Formalin/PFA-fixed paraffin-embedded sections)

Immunohistochemical staining (Formalin-fixed paraffin-embedded sections) of mouse colon with MCM2 monoclonal antibody, clone BCA-13 (Cat # MAB20472).

Specification

Product Description	Rabbit monoclonal antibody raised against synthetic peptide of human MCM2.
Immunogen	A synthetic peptide corresponding to human MCM2.
Host	Rabbit
Theoretical MW (kDa)	101.896
Reactivity	Human
Form	Liquid
Purification	Affinity purification

Isotype	IgG
Recommend Usage	Immunocytochemistry (1:50-1:200) Immunofluorescence (1:50-1:200) Immunohistochemistry (Formalin/PFA-fixed paraffin-embedded sections) (1:50-1:200) Western Blot (1:500-1:2000) The optimal working dilution should be determined by the end user.
Storage Buffer	In PBS, 150 mM NaCl, pH 7.4 (50% glycerol, 0.02% sodium azide).
Storage Instruction	Store at -20°C for one year. After reconstitution, at 4°C for one month. It can also be aliquotted and stored frozen at -20°C for a longer time. Avoid repeated freezing and thawing.
Note	This product contains sodium azide: a POISONOUS AND HAZARDOUS SUBSTANCE which should be handled by trained staff only.

Applications

- Western Blot (Cell lysate)

Western Blot analysis of HeLa cell lysate with MCM2 monoclonal antibody, clone BCA-13 (Cat # MAB20472).

- Immunohistochemistry (Formalin/PFA-fixed paraffin-embedded sections)

Immunohistochemical staining (Formalin-fixed paraffin-embedded sections) of mouse colon with MCM2 monoclonal antibody, clone BCA-13 (Cat # MAB20472).

- Immunocytochemistry

- Immunofluorescence

Gene Info — MCM2

Entrez GeneID	4171
Protein Accession#	P49736
Gene Name	MCM2
Gene Alias	BM28, CCNL1, CDCL1, D3S3194, KIAA0030, MGC10606, MITOTIN, cdc19
Gene Description	minichromosome maintenance complex component 2
Omim ID	116945
Gene Ontology	Hyperlink

Gene Summary

The protein encoded by this gene is one of the highly conserved mini-chromosome maintenance proteins (MCM) that are involved in the initiation of eukaryotic genome replication. The hexameric protein complex formed by MCM proteins is a key component of the pre-replication complex (pre-RC) and may be involved in the formation of replication forks and in the recruitment of other DNA replication related proteins. This protein forms a complex with MCM4, 6, and 7, and has been shown to regulate the helicase activity of the complex. This protein is phosphorylated, and thus regulated by, protein kinases CDC2 and CDC7. [provided by RefSeq]

Other Designations

DNA replication licensing factor MCM2|MCM2 minichromosome maintenance deficient 2, mitotin|cell division cycle-like 1|cyclin-like 1|minichromosome maintenance deficient 2 (mitotin)|nuclear protein BM28

Pathway

- [Cell cycle](#)
- [DNA replication](#)

Disease

- [Genetic Predisposition to Disease](#)
- [Ovarian Neoplasms](#)