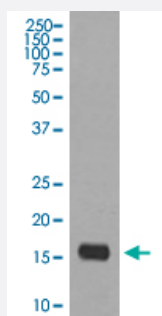


MAP1LC3A monoclonal antibody, clone EOD-13

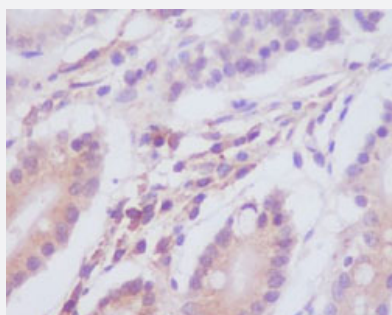
Catalog # MAB20467 Size 100 uL

Applications



Western Blot (Cell lysate)

Western Blot analysis of HeLa cell lysate with MAP1LC3A monoclonal antibody, clone EOD-13 (Cat # MAB20467).



Immunohistochemistry (Formalin/PFA-fixed paraffin-embedded sections)

Immunohistochemical staining (Formalin-fixed paraffin-embedded sections) of human stomach with MAP1LC3A monoclonal antibody, clone EOD-13 (Cat # MAB20467).

Specification

Product Description	Rabbit monoclonal antibody raised against synthetic peptide of human MAP1LC3A.
Immunogen	A synthetic peptide corresponding to human MAP1LC3A.
Host	Rabbit
Theoretical MW (kDa)	14.272
Reactivity	Human
Form	Liquid
Purification	Affinity purification

Isotype	IgG
Recommend Usage	Flow Cytometry Immunocytochemistry (1:50-1:200) Immunofluorescence (1:50-1:200) Immunohistochemistry (Formalin/PFA-fixed paraffin-embedded sections) (1:50-1:200) Immunoprecipitation (1:50) Western Blot (1:500-1:2000) The optimal working dilution should be determined by the end user.
Storage Buffer	In PBS, 150 mM NaCl, pH 7.4 (50% glycerol, 0.02% sodium azide).
Storage Instruction	Store at -20°C for one year. After reconstitution, at 4°C for one month. It can also be aliquotted and stored frozen at -20°C for a longer time. Avoid repeated freezing and thawing.
Note	This product contains sodium azide: a POISONOUS AND HAZARDOUS SUBSTANCE which should be handled by trained staff only.

Applications

- Western Blot (Cell lysate)

Western Blot analysis of HeLa cell lysate with MAP1LC3A monoclonal antibody, clone EOD-13 (Cat # MAB20467).

- Immunohistochemistry (Formalin/PFA-fixed paraffin-embedded sections)

Immunohistochemical staining (Formalin-fixed paraffin-embedded sections) of human stomach with MAP1LC3A monoclonal antibody, clone EOD-13 (Cat # MAB20467).

- Immunocytochemistry

- Immunofluorescence

- Immunoprecipitation

- Flow Cytometry

Gene Info — MAP1LC3A

Entrez GeneID	84557
---------------	-----------------------

Protein Accession#	Q9H492
--------------------	------------------------

Gene Name	MAP1LC3A
-----------	----------

Gene Alias	LC3, LC3A, MAP1ALC3, MAP1BLC3
Gene Description	microtubule-associated protein 1 light chain 3 alpha
Omim ID	601242
Gene Ontology	Hyperlink
Gene Summary	MAP1A and MAP1B are microtubule-associated proteins which mediate the physical interactions between microtubules and components of the cytoskeleton. MAP1A and MAP1B each consist of a heavy chain subunit and multiple light chain subunits. The protein encoded by this gene is one of the light chain subunits and can associate with either MAP1A or MAP1B. Two transcript variants encoding different isoforms have been found for this gene. [provided by RefSeq]
Other Designations	MAP1 light chain 3-like protein 1 MAP1A/1B light chain 3 A MAP1A/MAP1B LC3 A OTTHUMP0000030696 OTTHUMP00000030697 OTTHUMP00000030698 microtubule-associated proteins 1A/1B light chain 3