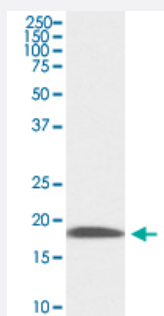


Ly6a monoclonal antibody, clone AAIF-12

Catalog # MAB20460 Size 100 uL

Applications



Western Blot (Tissue lysate)

Western Blot analysis of mouse kidney tissue lysate with Ly6a monoclonal antibody, clone AAIF-12 (Cat # MAB20460).

Specification

Product Description Rabbit monoclonal antibody raised against synthetic peptide of Ly6a.

Immunogen A synthetic peptide corresponding to Ly6a.

Host Rabbit

Theoretical MW (kDa) 14.377

Reactivity Mouse

Form Liquid

Purification Affinity purification

Isotype IgG

Recommend Usage
Immunohistochemistry (1:50-1:200)
Western Blot (1:500-1:2000)
The optimal working dilution should be determined by the end user.

Storage Buffer In PBS, 150 mM NaCl, pH 7.4 (50% glycerol, 0.02% sodium azide).

Storage Instruction

Store at -20°C for one year. After reconstitution, at 4°C for one month. It can also be aliquotted and stored frozen at -20°C for a longer time. Avoid repeated freezing and thawing.

Note

This product contains sodium azide: a POISONOUS AND HAZARDOUS SUBSTANCE which should be handled by trained staff only.

Applications

- Western Blot (Tissue lysate)

Western Blot analysis of mouse kidney tissue lysate with Ly6a monoclonal antibody, clone AAIF-12 (Cat # MAB20460).

- Immunohistochemistry

Gene Info — Ly6a

Entrez GeneID	110454
----------------------	------------------------

Protein Accession#	P05533
---------------------------	------------------------

Gene Name	Ly6a
------------------	------

Gene Alias	Ly-6A.2, Ly-6A/E, Ly-6E.1, Sca-1, Sca1, TAP
-------------------	---

Gene Description	lymphocyte antigen 6 complex, locus A
-------------------------	---------------------------------------

Gene Ontology	Hyperlink
----------------------	---------------------------

Gene Summary	O
---------------------	---

Other Designations	-
---------------------------	---