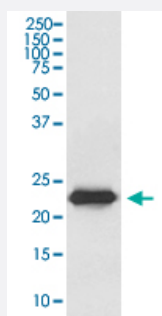


LCN2 monoclonal antibody, clone AABA-12

Catalog # MAB20449 Size 100 uL

Applications



Western Blot (Cell lysate)

Western Blot analysis of SW480 cell lysate with LCN2 monoclonal antibody, clone AABA-12 (Cat # MAB20449).

Specification

Product Description Rabbit monoclonal antibody raised against synthetic peptide of human LCN2.

Immunogen A synthetic peptide corresponding to human LCN2.

Host Rabbit

Theoretical MW (kDa) 22.588

Reactivity Human

Form Liquid

Purification Affinity purification

Isotype IgG

Recommend Usage

- Immunocytochemistry (1:50-1:200)
- Immunofluorescence (1:50-1:200)
- Immunohistochemistry (1:50-1:200)
- Western Blot (1:500-1:2000)
- The optimal working dilution should be determined by the end user.

Storage Buffer In PBS, 150 mM NaCl, pH 7.4 (50% glycerol, 0.02% sodium azide).

Storage Instruction

Store at -20°C for one year. After reconstitution, at 4°C for one month. It can also be aliquotted and stored frozen at -20°C for a longer time. Avoid repeated freezing and thawing.

Note

This product contains sodium azide: a POISONOUS AND HAZARDOUS SUBSTANCE which should be handled by trained staff only.

Applications

- Western Blot (Cell lysate)

Western Blot analysis of SW480 cell lysate with LCN2 monoclonal antibody, clone AABA-12 (Cat # MAB20449).

- Immunohistochemistry

- Immunocytochemistry

- Immunofluorescence

Gene Info — LCN2

Entrez GeneID [3934](#)

Protein Accession# [P80188](#)

Gene Name LCN2

Gene Alias NGAL

Gene Description lipocalin 2

Omim ID [600181](#)

Gene Ontology [Hyperlink](#)

Other Designations OTTHUMP00000022238|OTTHUMP00000022240|neutrophil gelatinase-associated lipocalin|oncogene 24p3|siderocalin

Disease

- [Abortion](#)

- [Genetic Predisposition to Disease](#)

- [Ovarian Neoplasms](#)