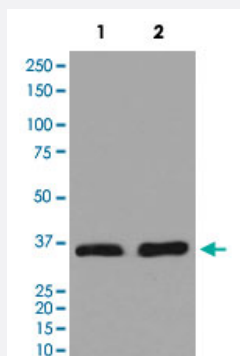


Lactate Dehydrogenase monoclonal antibody, clone CFE-12

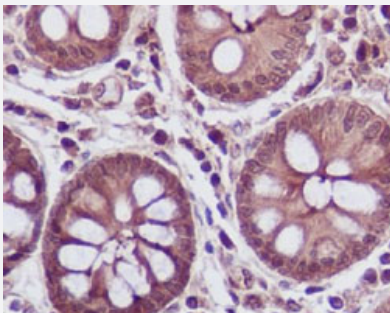
Catalog # MAB20433 Size 100 uL

Applications



Western Blot

Western Blot analysis of Lane 1: HeLa cell and Lane 2: human heart tissue lysates with Lactate Dehydrogenase monoclonal antibody, clone CFE-12 (Cat # MAB20433).



Immunohistochemistry (Formalin/PFA-fixed paraffin-embedded sections)

Immunohistochemical staining (Formalin-fixed paraffin-embedded sections) of human colon with Lactate Dehydrogenase monoclonal antibody, clone CFE-12 (Cat # MAB20433).

Specification

Product Description	Rabbit monoclonal antibody raised against Lactate Dehydrogenase.
Immunogen	A synthetic peptide corresponding to Lactate Dehydrogenase.
Host	Rabbit
Reactivity	Human
Form	Liquid
Purification	Affinity purification

Isotype	IgG
Recommend Usage	Flow Cytometry (1:50) Immunocytochemistry (1:50-1:100) Immunofluorescence (1:50-1:100) Immunohistochemistry (Formalin/PFA-fixed paraffin-embedded sections) (1:50-1:100) Immunoprecipitation (1:50) Western Blot (1:500-1:2000) The optimal working dilution should be determined by the end user.
Storage Buffer	In PBS, 150 mM NaCl, pH 7.4 (50% glycerol, 0.02% sodium azide).
Storage Instruction	Store at -20°C for one year. After reconstitution, at 4°C for one month. It can also be aliquotted and stored frozen at -20°C for a longer time. Avoid repeated freezing and thawing.
Note	This product contains sodium azide: a POISONOUS AND HAZARDOUS SUBSTANCE which should be handled by trained staff only.

Applications

- Western Blot

Western Blot analysis of Lane 1: HeLa cell and Lane 2: human heart tissue lysates with Lactate Dehydrogenase monoclonal antibody, clone CFE-12 (Cat # MAB20433).

- Immunohistochemistry (Formalin/PFA-fixed paraffin-embedded sections)

Immunohistochemical staining (Formalin-fixed paraffin-embedded sections) of human colon with Lactate Dehydrogenase monoclonal antibody, clone CFE-12 (Cat # MAB20433).

- Immunocytochemistry

- Immunofluorescence

- Immunoprecipitation

- Flow Cytometry