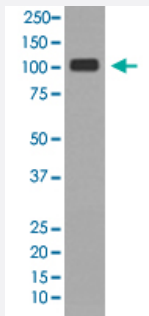


# AOF2 monoclonal antibody, clone DID-11

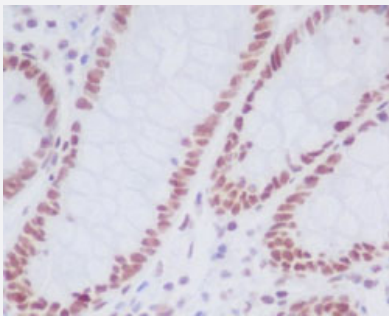
Catalog # MAB20422      Size 100 uL

## Applications



### Western Blot (Cell lysate)

Western Blot analysis of HeLa cell lysate with AOF2 monoclonal antibody, clone DID-11 (Cat # MAB20422).



### Immunohistochemistry (Formalin/PFA-fixed paraffin-embedded sections)

Immunohistochemical staining (Formalin-fixed paraffin-embedded sections) of human colon with AOF2 monoclonal antibody, clone DID-11 (Cat # MAB20422).

## Specification

Product Description	Rabbit monoclonal antibody raised against synthetic peptide of human AOF2.
Immunogen	A synthetic peptide corresponding to human AOF2.
Host	Rabbit
Theoretical MW (kDa)	92.903
Reactivity	Human
Form	Liquid
Purification	Affinity purification

Isotype	IgG
Recommend Usage	Immunocytochemistry (1:50-1:200) Immunofluorescence (1:50-1:200) Immunohistochemistry (Formalin/PFA-fixed paraffin-embedded sections) (1:50-1:200) Immunoprecipitation (1:30) Western Blot (1:1000-1:2000) The optimal working dilution should be determined by the end user.
Storage Buffer	In PBS, 150 mM NaCl, pH 7.4 (50% glycerol, 0.02% sodium azide).
Storage Instruction	Store at -20°C for one year. After reconstitution, at 4°C for one month. It can also be aliquotted and stored frozen at -20°C for a longer time. Avoid repeated freezing and thawing.
Note	This product contains sodium azide: a POISONOUS AND HAZARDOUS SUBSTANCE which should be handled by trained staff only.

## Applications

- Western Blot (Cell lysate)

Western Blot analysis of HeLa cell lysate with AOF2 monoclonal antibody, clone DID-11 (Cat # MAB20422).

- Immunohistochemistry (Formalin/PFA-fixed paraffin-embedded sections)

Immunohistochemical staining (Formalin-fixed paraffin-embedded sections) of human colon with AOF2 monoclonal antibody, clone DID-11 (Cat # MAB20422).

- Immunocytochemistry

- Immunofluorescence

- Immunoprecipitation

## Gene Info — AOF2

Entrez GeneID	<a href="#">23028</a>
Protein Accession#	<a href="#">O60341</a>
Gene Name	AOF2
Gene Alias	BHC110, KDM1, KIAA0601, LSD1
Gene Description	amine oxidase (flavin containing) domain 2

Omim ID	<a href="#">609132</a>
Gene Ontology	<a href="#">Hyperlink</a>
Gene Summary	<p>This gene encodes a nuclear protein containing a SWIRM domain, a FAD-binding motif, and an a mine oxidase domain. This protein is a component of several histone deacetylase complexes, though it silences genes by functioning as a histone demethylase. Alternative splicing results in multiple transcript variants. [provided by RefSeq</p>
Other Designations	<p>BRAF35-HDAC complex protein BHC110 FAD-binding protein BRAF35-HDAC complex, 110 kDa subunit lysine (K)-specific demethylase 1 lysine-specific histone demethylase 1</p>