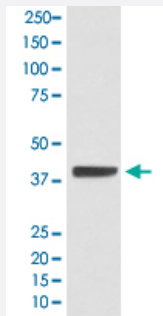


ISL1 monoclonal antibody, clone EHO-9

Catalog # MAB20407 Size 100 uL

Applications



Western Blot (Cell lysate)

Western Blot analysis of K562 cell lysate with ISL1 monoclonal antibody, clone EHO-9 (Cat # MAB20407).

Specification

Product Description Rabbit monoclonal antibody raised against synthetic peptide of human ISL1.

Immunogen A synthetic peptide corresponding to human ISL1.

Host Rabbit

Theoretical MW (kDa) 39.036

Reactivity Human

Form Liquid

Purification Affinity purification

Isotype IgG

Recommend Usage

- Immunocytochemistry (1:50-1:200)
- Immunofluorescence (1:50-1:200)
- Immunoprecipitation (1:50)
- Western Blot (1:1000-1:2000)
- The optimal working dilution should be determined by the end user.

Storage Buffer In PBS, 150 mM NaCl, pH 7.4 (50% glycerol, 0.02% sodium azide).

Storage Instruction

Store at -20°C for one year. After reconstitution, at 4°C for one month. It can also be aliquotted and stored frozen at -20°C for a longer time. Avoid repeated freezing and thawing.

Note

This product contains sodium azide: a POISONOUS AND HAZARDOUS SUBSTANCE which should be handled by trained staff only.

Applications

- Western Blot (Cell lysate)

Western Blot analysis of K562 cell lysate with ISL1 monoclonal antibody, clone EHO-9 (Cat # MAB20407).

- Immunocytochemistry

- Immunofluorescence

- Immunoprecipitation

Gene Info — ISL1

Entrez GeneID[3670](#)**Protein Accession#**[P61371](#)**Gene Name**

ISL1

Gene Alias

Isl-1

Gene Description

ISL LIM homeobox 1

Omim ID[600366](#)**Gene Ontology**[Hyperlink](#)**Gene Summary**

This gene encodes a member of the LIM/homeodomain family of transcription factors. The encoded protein binds to the enhancer region of the insulin gene, among others, and may play an important role in regulating insulin gene expression. The encoded protein is central to the development of pancreatic cell lineages and may also be required for motor neuron generation. Mutations in this gene have been associated with maturity-onset diabetes of the young. [provided by RefSeq]

Other Designations

ISL1 transcription factor, LIM/homeodomain|islet-1

Disease

- [Attention Deficit Disorder with Hyperactivity](#)
- [Diabetes Mellitus](#)
- [Genetic Predisposition to Disease](#)
- [Heart Defects](#)
- [Tourette Syndrome](#)