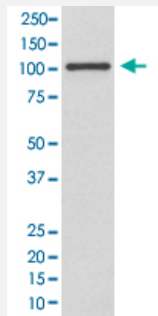


# INPP4B monoclonal antibody, clone GDO-9

Catalog # MAB20379      Size 100 uL

## Applications



### Western Blot (Cell lysate)

Western Blot analysis of MCF-7 cell lysate with INPP4B monoclonal antibody, clone GDO-9 (Cat # MAB20379).

## Specification

**Product Description** Rabbit monoclonal antibody raised against synthetic peptide of human INPP4B.

**Immunogen** A synthetic peptide corresponding to human INPP4B.

**Host** Rabbit

**Theoretical MW (kDa)** 104.738

**Reactivity** Human

**Form** Liquid

**Purification** Affinity purification

**Isotype** IgG

**Recommend Usage**  
 Flow Cytometry (1:50)  
 Immunohistochemistry (1:50-1:200)  
 Western Blot (1:1000-1:2000)  
 The optimal working dilution should be determined by the end user.

**Storage Buffer** In PBS, 150 mM NaCl, pH 7.4 (50% glycerol, 0.02% sodium azide).

**Storage Instruction**

Store at -20°C for one year. After reconstitution, at 4°C for one month. It can also be aliquotted and stored frozen at -20°C for a longer time. Avoid repeated freezing and thawing.

**Note**

This product contains sodium azide: a POISONOUS AND HAZARDOUS SUBSTANCE which should be handled by trained staff only.

## Applications

- Western Blot (Cell lysate)

Western Blot analysis of MCF-7 cell lysate with INPP4B monoclonal antibody, clone GDO-9 (Cat # MAB20379).

- Immunohistochemistry

- Flow Cytometry

## Gene Info — INPP4B

**Entrez GeneID**[8821](#)**Protein Accession#**[O15327](#)**Gene Name**

INPP4B

**Gene Alias**

MGC132014

**Gene Description**

inositol polyphosphate-4-phosphatase, type II, 105kDa

**Omim ID**[607494](#)**Gene Ontology**[Hyperlink](#)**Gene Summary**

INPP4B encodes the inositol polyphosphate 4-phosphatase type II, one of the enzymes involved in phosphatidylinositol signaling pathways. This enzyme removes the phosphate group at position 4 of the inositol ring from inositol 3,4-bisphosphate. There is limited data to suggest that the human type II enzyme is subject to alternative splicing, as has been established for the type I enzyme. [provided by RefSeq]

**Other Designations**

inositol polyphosphate 4-phosphatase II; 4-phosphatase II|inositol polyphosphate-4-phosphatase, type II, 105kD

## Pathway

- [Inositol phosphate metabolism](#)

- [Metabolic pathways](#)
- [Phosphatidylinositol signaling system](#)

## Disease

- [Diabetes Mellitus](#)
- [Overweight](#)
- [Tobacco Use Disorder](#)