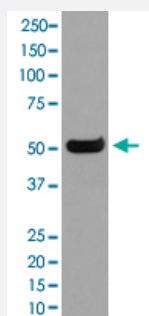


Human IgG4 monoclonal antibody, clone DCF-9

Catalog # MAB20364

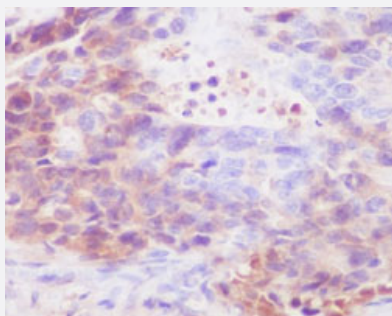
Size 100 uL

Applications



Western Blot (Tissue lysate)

Western Blot analysis of human spleen tissue lysate with Human IgG4 monoclonal antibody, clone DCF-9 (Cat # MAB20364).



Immunohistochemistry (Formalin/PFA-fixed paraffin-embedded sections)

Immunohistochemical staining (Formalin-fixed paraffin-embedded sections) of human stomach carcinoma with Human IgG4 monoclonal antibody, clone DCF-9 (Cat # MAB20364).

Specification

| | |
|---------------------|--|
| Product Description | Rabbit monoclonal antibody raised against synthetic peptide of Human IgG4. |
| Immunogen | A synthetic peptide corresponding to Human IgG4. |
| Host | Rabbit |
| Reactivity | Human |
| Form | Liquid |
| Purification | Affinity purification |
| Isotype | IgG |

| | |
|----------------------------|---|
| Recommend Usage | Immunohistochemistry (Formalin/PFA-fixed paraffin-embedded sections) (1:500-1:1000) Western Blot (1:1000-1:2000) The optimal working dilution should be determined by the end user. |
| Storage Buffer | In PBS, 150 mM NaCl, pH 7.4 (50% glycerol, 0.02% sodium azide). |
| Storage Instruction | Store at -20°C for one year. After reconstitution, at 4°C for one month. It can also be aliquotted and stored frozen at -20°C for a longer time. Avoid repeated freezing and thawing. |
| Note | This product contains sodium azide: a POISONOUS AND HAZARDOUS SUBSTANCE which should be handled by trained staff only. |

Applications

- Western Blot (Tissue lysate)

Western Blot analysis of human spleen tissue lysate with Human IgG4 monoclonal antibody, clone DCF-9 (Cat # MAB20364).

- Immunohistochemistry (Formalin/PFA-fixed paraffin-embedded sections)

Immunohistochemical staining (Formalin-fixed paraffin-embedded sections) of human stomach carcinoma with Human IgG4 monoclonal antibody, clone DCF-9 (Cat # MAB20364).