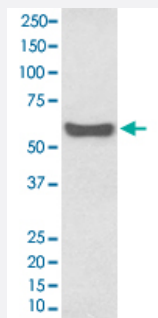


# IgA monoclonal antibody, clone AOII-9

Catalog # MAB20361      Size 100 uL

## Applications



### Western Blot (Tissue lysate)

Western Blot analysis of human plasma lysate with IgA monoclonal antibody, clone AOII-9 (Cat # MAB20361).

## Specification

**Product Description** Rabbit monoclonal antibody raised against synthetic peptide of IgA.

**Immunogen** A synthetic peptide corresponding to IgA.

**Host** Rabbit

**Reactivity** Human

**Form** Liquid

**Purification** Affinity purification

**Isotype** IgG

**Recommend Usage**

- Immunocytochemistry (1:50-1:200)
- Immunofluorescence (1:50-1:200)
- Immunohistochemistry (1:50-1:200)
- Immunoprecipitation (1:50)
- Western Blot (1:500-1:2000)
- The optimal working dilution should be determined by the end user.

**Storage Buffer** In PBS, 150 mM NaCl, pH 7.4 (50% glycerol, 0.02% sodium azide).

**Storage Instruction**

Store at -20°C for one year. After reconstitution, at 4°C for one month. It can also be aliquotted and stored frozen at -20°C for a longer time. Avoid repeated freezing and thawing.

**Note**

This product contains sodium azide: a POISONOUS AND HAZARDOUS SUBSTANCE which should be handled by trained staff only.

## Applications

- Western Blot (Tissue lysate)

Western Blot analysis of human plasma lysate with IgA monoclonal antibody, clone AOI-9 (Cat # MAB20361).

- Immunohistochemistry

- Immunocytochemistry

- Immunofluorescence

- Immunoprecipitation