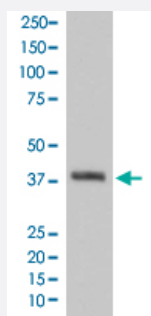


HTRA2 monoclonal antibody, clone EEH-8

Catalog # MAB20353 Size 100 uL

Applications



Western Blot (Cell lysate)

Western Blot analysis of Jurkat cell lysate with HTRA2 monoclonal antibody, clone EEH-8 (Cat # MAB20353).

Specification

Product Description Rabbit monoclonal antibody raised against synthetic peptide of human HTRA2.

Immunogen A synthetic peptide corresponding to human HTRA2.

Host Rabbit

Theoretical MW (kDa) 48.841

Reactivity Human

Form Liquid

Purification Affinity purification

Isotype IgG

Recommend Usage
Immunohistochemistry (1:50-1:200)
Immunoprecipitation (1:30)
Western Blot (1:500-1:2000)
The optimal working dilution should be determined by the end user.

Storage Buffer In PBS, 150 mM NaCl, pH 7.4 (50% glycerol, 0.02% sodium azide).

Storage Instruction

Store at -20°C for one year. After reconstitution, at 4°C for one month. It can also be aliquotted and stored frozen at -20°C for a longer time. Avoid repeated freezing and thawing.

Note

This product contains sodium azide: a POISONOUS AND HAZARDOUS SUBSTANCE which should be handled by trained staff only.

Applications

- Western Blot (Cell lysate)

Western Blot analysis of Jurkat cell lysate with HTRA2 monoclonal antibody, clone EEH-8 (Cat # MAB20353).

- Immunohistochemistry

- Immunoprecipitation

Gene Info — HTRA2

Entrez GeneID[27429](#)**Protein Accession#**[O43464](#)**Gene Name**

HTRA2

Gene Alias

OMI, PARK13, PRSS25

Gene Description

HtrA serine peptidase 2

Omim ID[606441](#) [610297](#)**Gene Ontology**[Hyperlink](#)**Gene Summary**

This gene encodes a serine protease. The protein has been localized in the endoplasmic reticulum and interacts with an alternatively spliced form of mitogen-activated protein kinase 14. The protein has also been localized to the mitochondria with release to the cytosol following apoptotic stimulus. The protein is thought to induce apoptosis by binding the apoptosis inhibitory protein baculoviral IAP repeat-containing 4. Nuclear localization of this protein has also been observed. Alternative splicing of this gene results in two transcript variants encoding different isoforms. Additional transcript variants have been described, but their full-length sequences have not been determined. [provided by RefSeq]

Other Designations

HtrA-like serine protease|Omi stress-regulated endoprotease|high temperature requirement protein A2|protease, serine, 25

Disease

- [Genetic Predisposition to Disease](#)
- [Parkinson disease](#)
- [Parkinsonian Disorders](#)