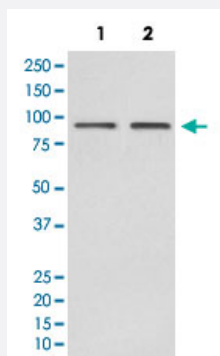


HSP90AB1 monoclonal antibody, clone BAA-8

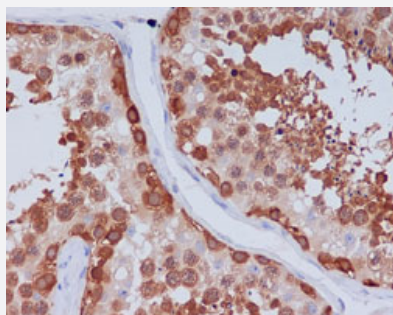
Catalog # MAB20346 Size 100 uL

Applications



Western Blot (Cell lysate)

Western Blot analysis of Lane 1: HeLa and Lane 2: Jurkat cell lysates with HSP90AB1 monoclonal antibody, clone BAA-8 (Cat # MAB20346).



Immunohistochemistry (Formalin/PFA-fixed paraffin-embedded sections)

Immunohistochemical staining (Formalin-fixed paraffin-embedded sections) of human testis with HSP90AB1 monoclonal antibody, clone BAA-8 (Cat # MAB20346).

Specification

Product Description	Rabbit monoclonal antibody raised against synthetic peptide of human HSP90AB1.
Immunogen	A synthetic peptide corresponding to human HSP90AB1.
Host	Rabbit
Theoretical MW (kDa)	83.264
Reactivity	Human
Form	Liquid

Purification	Affinity purification
Isotype	IgG
Recommend Usage	Flow Cytometry (1:50) Immunocytochemistry (1:50-1:200) Immunofluorescence (1:50-1:200) Immunohistochemistry (Formalin/PFA-fixed paraffin-embedded sections) (1:50-1:200) Immunoprecipitation (1:50) Western Blot (1:500-1:2000) The optimal working dilution should be determined by the end user.
Storage Buffer	In PBS, 150 mM NaCl, pH 7.4 (50% glycerol, 0.02% sodium azide).
Storage Instruction	Store at -20°C for one year. After reconstitution, at 4°C for one month. It can also be aliquotted and stored frozen at -20°C for a longer time. Avoid repeated freezing and thawing.
Note	This product contains sodium azide: a POISONOUS AND HAZARDOUS SUBSTANCE which should be handled by trained staff only.

Applications

- Western Blot (Cell lysate)

Western Blot analysis of Lane 1: HeLa and Lane 2: Jurkat cell lysates with HSP90AB1 monoclonal antibody, clone BAA-8 (Cat # MAB20346).

- Immunohistochemistry (Formalin/PFA-fixed paraffin-embedded sections)

Immunohistochemical staining (Formalin-fixed paraffin-embedded sections) of human testis with HSP90AB1 monoclonal antibody, clone BAA-8 (Cat # MAB20346).

- Immunocytochemistry

- Immunofluorescence

- Immunoprecipitation

- Flow Cytometry

Gene Info — HSP90AB1

Entrez GeneID [3326](#)

Protein Accession# [P08238](#)

Gene Name	HSP90AB1
Gene Alias	D6S182, FLJ26984, HSP90-BETA, HSP90B, HSPC2, HSPCB
Gene Description	heat shock protein 90kDa alpha (cytosolic), class B member 1
Omim ID	140572
Gene Ontology	Hyperlink
Gene Summary	HSP90 proteins are highly conserved molecular chaperones that have key roles in signal transduction, protein folding, protein degradation, and morphologic evolution. HSP90 proteins normally associate with other cochaperones and play important roles in folding newly synthesized proteins or stabilizing and refolding denatured proteins after stress. There are 2 major cytosolic HSP90 proteins, HSP90AA1 (MIM 140571), an inducible form, and HSP90AB1, a constitutive form. Other HSP90 proteins are found in endoplasmic reticulum (HSP90B1; MIM 191175) and mitochondria (TRAP1; MIM 606219) (Chen et al., 2005 [PubMed 16269234]).[supplied by OMIM]
Other Designations	OTTHUMP00000016517 OTTHUMP00000016518 OTTHUMP00000016519 OTTHUMP00000039869 heat shock 90kD protein 1, beta heat shock 90kDa protein 1, beta heat shock protein beta

Pathway

- [Antigen processing and presentation](#)
- [Pathways in cancer](#)
- [Prostate cancer](#)

Disease

- [Asthma](#)
- [Cardiovascular Diseases](#)
- [Diabetes Mellitus](#)
- [Edema](#)
- [Genetic Predisposition to Disease](#)
- [Hematologic Diseases](#)
- [Kidney Failure](#)
- [Occupational Diseases](#)