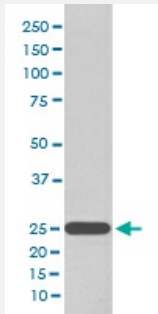


UCHL1 monoclonal antibody, clone AAAC-21

Catalog # MAB20318

Size 100 uL

Applications



Western Blot (Cell lysate)

Western blot analysis of 293T cell lysate with UCHL1 monoclonal antibody.

Specification

Product Description Rabbit monoclonal antibody raised against synthetic peptide of human UCHL1.

Immunogen A synthetic peptide corresponding to human UCHL1.

Host Rabbit

Reactivity Human

Form Liquid

Purification Affinity purification

Isotype IgG

Recommend Usage

- Flow Cytometry (1:50)
- Immunocytochemistry (1:50-1:200)
- Immunofluorescence (1:50-1:200)
- Immunohistochemistry (1:50-1:200)
- Immunoprecipitation (1:50)
- Western Blot (1:500-1:2000)
- The optimal working dilution should be determined by the end user.

Storage Buffer In PBS, pH 7.4, 150mM NaCl, 0.02% sodium azide and 50% glycerol.

Storage Instruction

Store at -20°C for one year. After reconstitution, at 4°C for one month. It can also be aliquotted and stored frozen at -20°C for a longer time. Avoid repeated freezing and thawing.

Note

This product contains sodium azide: a POISONOUS AND HAZARDOUS SUBSTANCE which should be handled by trained staff only.

Applications

- Western Blot (Cell lysate)

Western blot analysis of 293T cell lysate with UCHL1 monoclonal antibody.

- Immunohistochemistry (Formalin/PFA-fixed paraffin-embedded sections)

- Immunocytochemistry

- Immunofluorescence

- Immunoprecipitation

- Flow Cytometry

Gene Info — UCHL1

Entrez GeneID[7345](#)**Protein Accession#**[P09936](#)**Gene Name**

UCHL1

Gene Alias

PARK5, PGP9.5, Uch-L1

Gene Description

ubiquitin carboxyl-terminal esterase L1 (ubiquitin thiolesterase)

Omim ID[168600](#) [191342](#)**Gene Ontology**[Hyperlink](#)**Gene Summary**

The protein encoded by this gene belongs to the peptidase C12 family. This enzyme is a thiol protease that hydrolyzes a peptide bond at the C-terminal glycine of ubiquitin. This gene is specifically expressed in the neurons and in cells of the diffuse neuroendocrine system. Mutations in this gene may be associated with Parkinson disease

Other Designations

ubiquitin C-terminal esterase L1|ubiquitin carboxyl-terminal esterase L1|ubiquitin thiolesterase L1

Disease

- [Alzheimer disease](#)
- [Genetic Predisposition to Disease](#)
- [Huntington disease](#)
- [Movement Disorders](#)
- [Multiple System Atrophy](#)
- [Parkinson disease](#)
- [Parkinsonian Disorders](#)