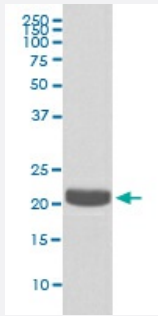


PEBP1 monoclonal antibody, clone E11-16

Catalog # MAB20311 Size 100 uL

Applications



Western Blot (Cell lysate)

Western blot analysis of A549 cell lysate with PEBP1 monoclonal antibody.

Specification

Product Description Rabbit monoclonal antibody raised against synthetic peptide of human PEBP1.

Immunogen A synthetic peptide corresponding to human PEBP1.

Host Rabbit

Reactivity Human

Form Liquid

Purification Affinity purification

Isotype IgG

Recommend Usage

- Immunocytochemistry (1:50-1:200)
- Immunofluorescence (1:50-1:200)
- Immunohistochemistry (1:50-1:200)
- Immunoprecipitation (1:20)
- Western Blot (1:500-1:2000)
- The optimal working dilution should be determined by the end user.

Storage Buffer In PBS, pH 7.4, 150mM NaCl, 0.02% sodium azide and 50% glycerol.

Storage Instruction

Store at -20°C for one year. After reconstitution, at 4°C for one month. It can also be aliquotted and stored frozen at -20°C for a longer time. Avoid repeated freezing and thawing.

Note

This product contains sodium azide: a POISONOUS AND HAZARDOUS SUBSTANCE which should be handled by trained staff only.

Applications

- Western Blot (Cell lysate)

Western blot analysis of A549 cell lysate with PEBP1 monoclonal antibody.

- Immunohistochemistry (Formalin/PFA-fixed paraffin-embedded sections)

- Immunocytochemistry

- Immunofluorescence

- Immunoprecipitation

Gene Info — PEBP1

Entrez GeneID[5037](#)**Protein Accession#**[P30086](#)**Gene Name**

PEBP1

Gene Alias

HCNP, PBP, PEBP, RKIP

Gene Description

phosphatidylethanolamine binding protein 1

Omim ID[604591](#)**Gene Ontology**[Hyperlink](#)**Other Designations**

Raf kinase inhibitory protein|prostatic binding protein