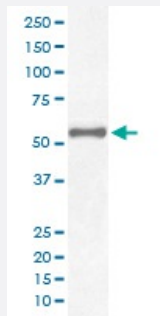


PAX7 monoclonal antibody, clone HGH-16

Catalog # MAB20295 Size 100 uL

Applications



Western Blot (Cell lysate)

Western blot analysis of HeLa cell lysate with PAX7 monoclonal antibody.

Specification

| | |
|----------------------------|---|
| Product Description | Rabbit monoclonal antibody raised against synthetic peptide of human PAX7. |
| Immunogen | A synthetic peptide corresponding to human PAX7. |
| Host | Rabbit |
| Reactivity | Human |
| Form | Liquid |
| Purification | Affinity purification |
| Isotype | IgG |
| Recommend Usage | Flow Cytometry (1:100) Western Blot (1:1000-1:2000) The optimal working dilution should be determined by the end user. |
| Storage Buffer | In PBS, pH 7.4, 150mM NaCl, 0.02% sodium azide and 50% glycerol. |
| Storage Instruction | Store at -20°C for one year. After reconstitution, at 4°C for one month. It can also be aliquotted and stored frozen at -20°C for a longer time. Avoid repeated freezing and thawing. |

Note

This product contains sodium azide: a POISONOUS AND HAZARDOUS SUBSTANCE which should be handled by trained staff only.

Applications

- Western Blot (Cell lysate)

Western blot analysis of HeLa cell lysate with PAX7 monoclonal antibody.

- Flow Cytometry

Gene Info — PAX7

Entrez GeneID [5081](#)

Protein Accession# [P23759](#)

Gene Name PAX7

Gene Alias HUP1, PAX7B

Gene Description paired box 7

Omim ID [167410 268220](#)

Gene Ontology [Hyperlink](#)

Gene Summary This gene is a member of the paired box (PAX) family of transcription factors. Members of this gene family typically contain a paired box domain, an octapeptide, and a paired-type homeodomain. These genes play critical roles during fetal development and cancer growth. The specific function of the paired box 7 gene is unknown but speculated to involve tumor suppression since fusion of this gene with a forkhead domain family member has been associated with alveolar rhabdomyosarcoma. Three transcript variants encoding different isoforms have been found for this gene. [provided by RefSeq]

Other Designations OTTHUMP00000002534|PAX7 transcriptional factor|paired box gene 7|paired box homeotic gene 7|paired domain gene 7

Disease

- [Cleft Lip](#)

- [Cleft Palate](#)

- [Genetic Predisposition to Disease](#)
- [Narcolepsy](#)