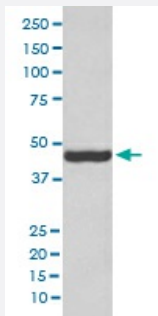


PAX2 monoclonal antibody, clone HGB-16

Catalog # MAB20291 Size 100 uL

Applications



Western Blot (Cell lysate)

Western blot analysis of human fetal kidney lysate with PAX2 monoclonal antibody.

Specification

Product Description	Rabbit monoclonal antibody raised against synthetic peptide of human PAX2.
Immunogen	A synthetic peptide corresponding to human PAX2.
Host	Rabbit
Reactivity	Human
Form	Liquid
Purification	Affinity purification
Isotype	IgG
Recommend Usage	Immunohistochemistry (1:50-1:200) Western Blot (1:1000-1:2000) The optimal working dilution should be determined by the end user.
Storage Buffer	In PBS, pH 7.4, 150mM NaCl, 0.02% sodium azide and 50% glycerol.
Storage Instruction	Store at -20°C for one year. After reconstitution, at 4°C for one month. It can also be aliquotted and stored frozen at -20°C for a longer time. Avoid repeated freezing and thawing.

Note

This product contains sodium azide: a POISONOUS AND HAZARDOUS SUBSTANCE which should be handled by trained staff only.

Applications

- Western Blot (Cell lysate)

Western blot analysis of human fetal kidney lysate with PAX2 monoclonal antibody.

- Immunohistochemistry (Formalin/PFA-fixed paraffin-embedded sections)

Gene Info — PAX2

Entrez GeneID	5076
---------------	----------------------

Protein Accession#	Q02962
--------------------	------------------------

Gene Name	PAX2
-----------	------

Gene Alias	-
------------	---

Gene Description	paired box 2
------------------	--------------

Omim ID	120330 167409
---------	---

Gene Ontology	Hyperlink
---------------	---------------------------

Gene Summary	PAX2 encodes paired box gene 2, one of many human homologues of the Drosophila melanogaster gene prd. The central feature of this transcription factor gene family is the conserved DNA-binding paired box domain. PAX2 is believed to be a target of transcriptional suppression by the tumor suppressor gene WT1. Mutations within PAX2 have been shown to result in optic nerve colobomas and renal hypoplasia. Alternative splicing of this gene results in multiple transcript variants. [provided by RefSeq]
--------------	--

Other Designations	OTTHUMP00000020286 OTTHUMP00000020287 paired box gene 2 paired box homeotic gene 2 paired box protein 2
--------------------	---

Disease

- [Alzheimer Disease](#)
- [Genetic Predisposition to Disease](#)
- [Nephritis](#)

- [Purpura](#)
- [Vesico-Ureteral Reflux](#)