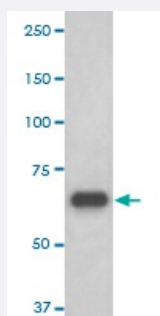


RPS6KB1 monoclonal antibody, clone CHB-18

Catalog # MAB20279

Size 100 uL

Applications



Western Blot (Cell lysate)

Western blot analysis of 293T cell lysate with RPS6KB1 monoclonal antibody.

Specification

Product Description Rabbit monoclonal antibody raised against synthetic peptide of human RPS6KB1.

Immunogen A synthetic peptide corresponding to human RPS6KB1.

Host Rabbit

Reactivity Human

Form Liquid

Purification Affinity purification

Isotype IgG

Recommend Usage

- Flow Cytometry (1:100)
- Immunohistochemistry (1:50-1:200)
- Immunoprecipitation (1:50)
- Western Blot (1:1000-1:2000)
- The optimal working dilution should be determined by the end user.

Storage Buffer In PBS, pH 7.4, 150mM NaCl, 0.02% sodium azide and 50% glycerol.

Storage Instruction

Store at -20°C for one year. After reconstitution, at 4°C for one month. It can also be aliquotted and stored frozen at -20°C for a longer time. Avoid repeated freezing and thawing.

Note

This product contains sodium azide: a POISONOUS AND HAZARDOUS SUBSTANCE which should be handled by trained staff only.

Applications

- Western Blot (Cell lysate)

Western blot analysis of 293T cell lysate with RPS6KB1 monoclonal antibody.

- Immunohistochemistry (Formalin/PFA-fixed paraffin-embedded sections)

- Immunoprecipitation

- Flow Cytometry

Gene Info — RPS6KB1

Entrez GeneID[6198](#)**Protein Accession#**[P23443](#)**Gene Name**

RPS6KB1

Gene Alias

PS6K, S6K, S6K1, STK14A, p70(S6K)-alpha, p70-S6K, p70-alpha

Gene Description

ribosomal protein S6 kinase, 70kDa, polypeptide 1

Omim ID[608938](#)**Gene Ontology**[Hyperlink](#)**Gene Summary**

This gene encodes a member of the RSK (ribosomal S6 kinase) family of serine/threonine kinases. This kinase contains 2 non-identical kinase catalytic domains and phosphorylates several residues of the S6 ribosomal protein. The kinase activity of this protein leads to an increase in protein synthesis and cell proliferation. Amplification of the region of DNA encoding this gene and overexpression of this kinase are seen in some breast cancer cell lines. Alternate translational start sites have been described and alternate transcriptional splice variants have been observed but have not been thoroughly characterized. [provided by RefSeq]

Other Designations

p70 S6 kinase, alpha 1|p70 S6 kinase, alpha 2|ribosomal protein S6 kinase, 70kD, polypeptide 1|serine/threonine kinase 14 alpha

Pathway

- [Acute myeloid leukemia](#)
- [ErbB signaling pathway](#)
- [Fc gamma R-mediated phagocytosis](#)
- [Insulin signaling pathway](#)
- [mTOR signaling pathway](#)
- [TGF-beta signaling pathway](#)

Disease

- [Cardiovascular Diseases](#)
- [Diabetes Mellitus](#)
- [Edema](#)
- [Head and Neck Neoplasms](#)
- [Neoplasm Recurrence](#)
- [Neoplasms](#)