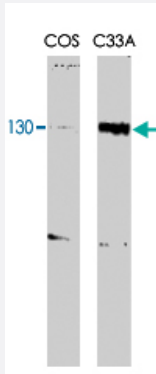


RBL2 monoclonal antibody, clone KAB40

Catalog # MAB2026 Size 100 ug

Applications



Western Blot (Cell lysate)

RBL2 monoclonal antibody, clone KAB40 (Cat # MAB2026) recognizes both the phosphorylated and unphosphorylated forms of p130 at aMW of 130kDa. The primary antibody diluted at 1 : 1000.

Specification

Product Description	Mouse monoclonal antibody raised against partial recombinant RBL2.
Immunogen	Recombinant GST fusion protein corresponding to N-terminus of RBL2.
Host	Mouse
Theoretical MW (kDa)	130
Reactivity	Human, Monkey, Mouse
Specificity	This antibody recognizes both the phosphorylated and unphosphorylated forms of p130 at MW of 130 KDa.
Form	Liquid
Isotype	IgG1
Quality Control Testing	Antibody Reactive Against Recombinant Protein.
Recommend Usage	Western blot (1:1000) The optimal working dilution should be determined by the end user.

Storage Buffer	In PBS (0.08% sodium azide)
Storage Instruction	Store at -20°C. Aliquot to avoid repeated freezing and thawing.
Note	This product contains sodium azide: a POISONOUS AND HAZARDOUS SUBSTANCE which should be handled by trained staff only.

Applications

- Western Blot (Cell lysate)

RBL2 monoclonal antibody, clone KAB40 (Cat # MAB2026) recognizes both the phosphorylated and unphosphorylated forms of p130 at aMW of 130kDa. The primary antibody diluted at 1 : 1000.

Gene Info — RBL2

Entrez GeneID	5934
Gene Name	RBL2
Gene Alias	FLJ26459, P130, Rb2
Gene Description	retinoblastoma-like 2 (p130)
Omim ID	180203
Gene Ontology	Hyperlink
Other Designations	-

Pathway

- [Cell cycle](#)
- [TGF-beta signaling pathway](#)

Disease

- [Genetic Predisposition to Disease](#)
- [Ovarian Neoplasms](#)