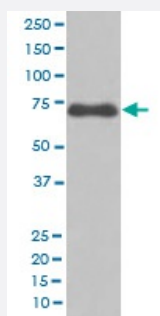


NUMB monoclonal antibody, clone AOGI-14

Catalog # MAB20255 Size 100 uL

Applications



Western Blot (Cell lysate)

Western blot analysis of Ramos cell lysate with NUMB monoclonal antibody.

Specification

Product Description	Rabbit monoclonal antibody raised against synthetic peptide of human NUMB.
Immunogen	A synthetic peptide corresponding to human NUMB.
Host	Rabbit
Reactivity	Human
Form	Liquid
Purification	Affinity purification
Isotype	IgG
Recommend Usage	Western Blot (1:500-1:2000) The optimal working dilution should be determined by the end user.
Storage Buffer	In PBS, pH 7.4, 150mM NaCl, 0.02% sodium azide and 50% glycerol.
Storage Instruction	Store at -20°C for one year. After reconstitution, at 4°C for one month. It can also be aliquotted and stored frozen at -20°C for a longer time. Avoid repeated freezing and thawing.

Note

This product contains sodium azide: a POISONOUS AND HAZARDOUS SUBSTANCE which should be handled by trained staff only.

Applications

- Western Blot (Cell lysate)

Western blot analysis of Ramos cell lysate with NUMB monoclonal antibody.

Gene Info — NUMB

Entrez GeneID [8650](#)

Protein Accession# [P49757](#)

Gene Name NUMB

Gene Alias S171

Gene Description numb homolog (Drosophila)

Omim ID [603728](#)

Gene Ontology [Hyperlink](#)

Gene Summary The protein encoded by this gene plays a role in the determination of cell fates during development. The encoded protein, whose degradation is induced in a proteasome-dependent manner by MDM2, is a membrane-bound protein that has been shown to associate with EPS15, LNX1, and NOTCH1. Four transcript variants encoding different isoforms have been found for this gene. [provided by RefSeq]

Other Designations numb homolog

Pathway

- [Notch signaling pathway](#)

Disease

- [Atherosclerosis](#)
- [Calcinosis](#)

- [Disease Susceptibility](#)